

**TRACTOR DRIVES**



# TRACTOR DRIVES

## Power drive for push-type hoists and underhung crane bridges.

YALE® tractor drives deliver greater productivity with existing push-type underhung crane bridges or push-type monorail hoists with motor-driven travel. Designed for capacities up to 5 tons, YALE® Tractor Drives are easy to install without removing or disturbing existing equipment.

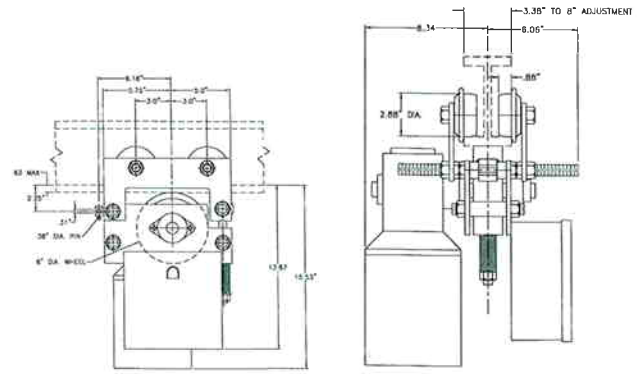
### Underhung Crane Bridges

Designed to accommodate any make unit, twin tractor units of the same design as the single unit tractor can be used to convert push-type crane bridges to electric drive. The twin unit synchronized YALE® Tractor Drives are wired to a universal electrical control panel located on the master tractor to provide simultaneous operation.

### For monorail trolley suspended hoists

This single, powerful, electrically motorized tractor provides fast horizontal travel while minimizing worker fatigue. A squirrel cage electric motor with torque multiplied by a heavy-duty gear reducer drives a urethane drive wheel. The drive wheel engages the underside of the monorail track, providing positive power drive.

CAPACITY (LBS)	SPEED (FPM)	YALE® CAT. #
2000	35	YTD-235
2000	55	YTD-255
2000	70	YTD-270
2000	105	YTD-2105
3000	35	YTD-335
3000	55	YTD-355
3000	70	YTD-370
3000	105	YTD-3105
5000	35	YTD-535
5000	55	YTD-555
5000	70	YTD-570
6000	35	YTD-635
6000	55	YTD-655
10,000	35	YTD-1035



**Motor** 1/2 hp @ 1800 rpm (1/4 hp @ 900 rpm for 35 fpm) Squirrel cage motor with permanently lubricated bearings. Standard NEMA C face 30 minute motor with Class F insulation.

**Drive** Direct drive with right-angle worm gear reducer. Fully enclosed aluminum housing for lubrication of gears and bearings.

**Drive Wheel** Drive wheel is 6" diameter, 2" wide with cast iron hub and a urethane thread. Wheel is spring loaded against the bottom of the beam for positive traction. Wheel is supported by permanently lubricated ball bearings.

**Construction** Steel plate construction with steel tie-rods for easy adjustment. Steel clevis with a 3/8" diameter pin is provided for towbar attachment.

**Trolley wheels** Cast iron fully machined wheels with universal tread for operation on tapered or flat-flange beams. Each wheel has two permanently lubricated sealed ball bearings.

**Beam Adjustment Range** Standard unit is adjustable for standard I-beams and flat-flange beams from 3.38" to 8" wide. Maximum flange thickness for standard unit is .62". Minimum curve for standard unit is 36" radius.

**Controls** Magnetic reversing contractor with mechanical interlock enclosed in a NEMA 1 enclosure with a terminal strip for control connections. Standard tractor is designed for 208-230/460 volt, 3 phase, 60 hertz supply. See options for other power supplies.

**Standard Finish** Air-dry machinery enamel

- Options**
- 575 volt, 3 phase, 60 hertz operation
  - 2, 4, 6, and 8 button push-button stations
  - Additional push-button cable length (10' standard)
  - NEMA 12, 4 or 4X control enclosures
  - Motor brake
  - Soft start (recommended for speeds above 70 fpm)
  - Two-speed or variable controls
  - Transformer for 115 volt power control
  - For other beams, options or custom designs, consult factory

For additional information contact your Yale representative or Yale headquarters direct.



414 West Broadway Ave.  
P.O. Box 769  
Muskegon, MI 49443-0769  
Ph: (800) 999-6318 Fax: (800) 766-0223