

ZEPHYR SWIVEL TRUCK

1/4 to 6 ton

- Efficient on runways located close to walls
- Great from patented monorail, especially when required for use with switches, turntables and interlocks
- One year warranty



ZEPHYR LOW HEADROOM

1 1/2 to 24 ton

- Designed for limited head room applications
- Minimum distance from bottom of I-beam to hook only 6 1/4" for smallest capacities
- One year warranty

TROLLEYS



SERIES 632

1/4 to 3 ton

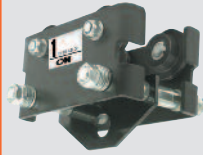
- Exclusive Dial-Fit collar quickly adapts trolley to wide range of beams and patented rails
- Lightweight
- Negotiates radius curves as tight as 7-10 inches
- Lifetime Warranty



SERIES 633

1/2 to 5 ton

- Frames connected by steel equalizer pin, secured by two nuts on each side
- Rugged steel side plates formed to include bumpers and trolley guards
- Fits wide range of beam applications



CBT

1/4 to 5 ton

- Plain and geared models available
- Wrap ground side plates
- Economical
- Metric rated
- Lifetime Warranty



SERIES 84A

1/2 to 25 ton

- Heavy duty steel side frames extend beyond the wheels to provide these trolleys with maximum strength, rigidity, and added protection for the trackwheels
- Available in both plain and geared versions



RAILSTAR

1/8 to 3 ton

- Lifetime lubricated double row ball bearings for high efficiency and low maintenance
- Four-button control station included for operating single hoist proportioned to 20 ft. lift



TRACTOR DRIVE

Up to 5 ton

- Monorail trolley track or twin unit synchronized drives available
- Squirrel cage motor with permanently lubricated bearings

ACCESSORIES & PRODUCTS

- Bridge Crane Kits
- Jib Cranes
- LodeRail™ Systems
- Chain Containers
- Cord Reels
- Festooning Packages
- Bronze Wheels / Hooks
- Zinc Plated Chain / Hooks
- Variable Speed Control
- Stainless Steel Chain
- NEMA Push Button Stations
- Infrared Remote Control
- Cady Spreader Beams
- Plate Clamps
- Binders
- Herc Alloy Chain Slings
- Hooks
- Shackles
- Hammerloks
- Hoist Rings



Columbus McKinnon Corporation
140 John James Audubon Parkway
Amherst, New York 14228-1197
800.888.0985 • 716.689.5400
fax: 716.689.5644
www.cmworks.com



WARNING

Overloading and Improper use can result in injury

- Do not exceed working load limit, load rating, or capacity.
- Do not use to lift people or loads over people.
- Use only alloy chain and attachments overhead lifting.
- Read and follow all instruction.







The Industry Leader

ELECTRIC CHAIN



LODESTAR 1/8 to 3 ton

- Available with hook, lug, plain, geared or motorized trolley
- Adjustable limit switch
- Grease filled transmission
- Overload protection
- H4 duty rating
- Available in single, two, or variable speeds
- Metric Rated
- Lifetime warranty



LODESTAR XL 2 TO 7 1/2 ton

- Forged ten pocket oblique-lay liftwheel
- Overload protection
- Adjustable limit switches
- Available in single, two, or variable speeds
- H4 Duty Rating
- Metric Rated
- Lifetime warranty



POWERSTAR 2 to 15 ton

- Rated H4, heavy duty
- Dual braking system
- Variable speed models available
- Wide range of lifting speeds
- Adjustable limit switches Metric rated Lifetime warranty



VALUSTAR 1/4 to 2 ton

- Overload protection Hook suspension standard
- Fully machined and heat treated gear train
- Metric rated
- One-year warranty



SHOPSTAR 250 to 1000 lbs.

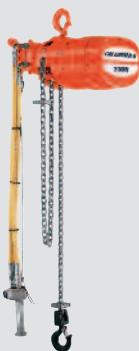
- Single reeved units weigh less than 30 lbs.
- Lifting speeds up to 40 feet per minute
- H4 duty rated
- Metric rated
- Lifetime Warranty

AIR CHAIN



AIRSTAR 1/4 to 1 ton

- Limit lever prevents over-travel in both directions
- Spark-resistant models available
- Metric rated
- Lifetime warranty



AIRSTAR 6 1/2 to 3 ton

- Positive action, spring biased Weston-type load brake holds the load & provides exacting load spotting and control
- Spark-resistant models available
- Metric rated
- Lifetime warranty



XL AIR 2 to 7 1/2 ton

- Forged ten pocket oblique-lay liftwheel
- Overload protection
- Air actuated motor brake
- Spark resistant models
- Metric rated
- Lifetime Warranty



TMM 140 300 lbs.

- Weighs only 20 lbs.
- Handle-mounted pendant control for one-handed operation and load positioning
- Precise speed control for accurate load spotting
- Lifetime Warranty



SHOPAIR 250 to 1000 lbs.

- Lifting speeds up to 31 feet per minute
- Normal operating air pressure is 90 PSI
- Gear train is lifetime lubricated
- Metric rated
- Lifetime warranty

The Industry Leader



HAND CHAIN



CYCLONE 1/4 to 10 ton

- Standard load limiter for overload protection
- Two-stage gear reduction w/ machined and hardened gears provides stable lifting and dependability
- Metric Rated
- Lifetime warranty



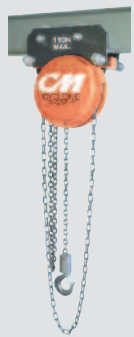
HURRICANE 360° 2 TO 10 ton

- Handwheel cover rotates 360° for hoist operation in any direction to keep operator away from the load
- Standard overload limiter
- Metric rated



622 SERIES 1/2 to 10 ton

- Lightweight steel construction
- Weston-type load brake requires no lubrication
- Easy to install, even in tight quarters (low headroom)
- Metric rated



CYCLONE ARMY TYPE 1/4 to 12 ton

- Low headroom models available
- Universal trolley wheels for flat or I-beam
- Overload limiter
- Metric rated
- Lifetime warranty



602 - 603 SERIES 550 to 1100 lbs.

- Overall length - 11"
- Free chaining feature serves to quickly attach the load
- Weston-type load brake
- Rubber hand grips for better comfort and security
- Metric Rated



653 SERIES 3/4 to 6 ton

- Impact resistant, stamped steel frame
- Simple one-handed, free chaining for fast load attachment
- All metal surfaces are plated for outdoor operation
- Metric Rated

Upper Shipyard Hook

Lower Shipyard Hook



PULLER 3/4 to 6 ton

- Weather proof brake
- Optional overload device
- Metric Rated
- Lifetime warranty



SHORT HANDLE PULLER 3/4 to 3 ton

- Easy one-hand operation
- Optional load limiter device
- Lifetime brake disc
- Metric rated
- Lifetime warranty



657 SERIES 3/4 to 6 ton

- Rugged & lightweight
- 360° rotating handle
- Easy free chaining
- Lifetime warranty
- Low handle effort
- Positive load control



RIGGER LEVER HOIST

3/4 to 1 1/2 ton

- Ratchet, driving pawl, and loading pawl for positive load control
- Metric Rated

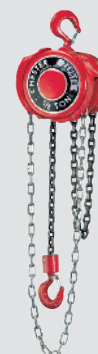


SPECIALTY HOIST

LOW HEADROOM CHAIN HOIST

1 to 24 ton

- Worm gear driven for smooth, quiet, trouble-free operation
- Redundant limit switches for both upper and lower hook travel
- One year warranty



ZEPHYR MANUAL HOIST

1/2 to 25 ton

- Fast acting Weston style brake provides smooth, positive load handling
- Army type trolley hoist available
- Spark resistant models
- One year warranty