

**Part Numbers for Brake Coils, Brake Assemblies, Rotors, Stators and Attaching Screws**

Key No.	Part Name	Models and Voltages																
		A, B, and E				AA, C, F and H				A-2, B-2 and E-2				AA-2, C-2, F-2 and H-2				
		110-1-50 115-1-60	220-1-50 230-1-60	230/460	575-3-60	110-1-50 115-1-60	220-1-50 230-1-60	230/460	575-3-60	230-3-60	460-3-60	575-3-60	230-3-60	460-3-60	575-3-60	230-3-60	460-3-60	575-3-60
627-250	Electric Brake Assembly - Complete	27656	27656	27659	27658	27681	27681	27684	27683	27659	27655	27683	27684	27656	27683	27656	27683	
627-259	Brake Coil	51517	51517	51518	51520	51517	51517	51518	51520	51518	51519	51520	51518	51519	51518	51519	51520	
627-310	Drive Shaft & Pinion S/A (items 627-311 thru 627-315, as applicable)	27653																
627-413	Rotor & Shaft Assembly	286005	286005	286004	286004	286001	286001	286000	286000	286002	286003	286003	286003	286003	286003	286003	286003	
627-415	Stator	287007 (60 HZ)	286007 (60 HZ)	287006	287009	287002 (60 HZ)	286006 (60 HZ)	287001	287005	287004	287004	287010	287003	287004	287010	287003	287004	287010
		286008 (50 HZ)	286009 (50 HZ)	286010 (50 HZ)	286011 (50 HZ)													
		27654																

Key No.	Part Name	Models and Voltages																
		J, L, R, AND RT				JJ, LL, RR, AND RRT				J-2, L-2, 4-2, AND RT-2				JJ-2, LL-2, RR-2, AND RRT-2				
		115-1-60	230-1-50/60	230/460	575-3-60	230/460	575-3-60	230-3-60	460-3-60	575-3-60	230-3-60	460-3-60	575-3-60	230-3-60	460-3-60	575-3-60	230-3-60	460-3-60
627-250	Electric Brake Assembly - Complete	35646	35646	35647	35647	35649	35648	36688	35647	35622	35649	35648	35623	36688	35649	35648	35623	36688
627-259	Brake Coil	51510	51510	51511	51511	51515	51512	51516	51511	51513	51515	51512	51514	51516	51515	51512	51514	51516
627-310	Drive Shaft & Pinion S/A (items 627-311 thru 627-315, as applicable)	35687 (12 Teeth and 13 Teeth Hub) for Models L, L-2, LL, LL-2, R, R-2, RR, RR-2, RT, Rt-2, RRT, and RRT-2 35688 (18 Teeth and 13 Teeth Hub) for Models J, J-2, JJ, & JJ-2																
627-411	Attaching Screws	87377	87377	87377	87377	87377	87336	87377	87336	87377	87336	87336	87336	87336	87336	87336	87336	87336
627-415	*3/4 Motor Assembly	367001	367028	**367040K	367003	**367050K	367009	367014	367015	367018	367020	367021	367022	367023	367023	367023	367023	367023
627-415A	Motor End Plate	367023																

\*3/4 Motor includes Stator, Rotor and Shaft Assembly and End Bell.

\*\*Motor Kit includes 'B1' & 'B2' Brake Jumpers.

Note: Except as indicated above, Electric Brake Assemblies, Brake Coils, Rotor Assemblies and Stators listed under "230/460" are also suitable for operation on 220/380-3-50 or 220/415-3-50. Those listed under "230" are also suitable for operation on 220-3-50 and those listed under "460" are also suitable for operation on 380-3-50 or 415-3-50.

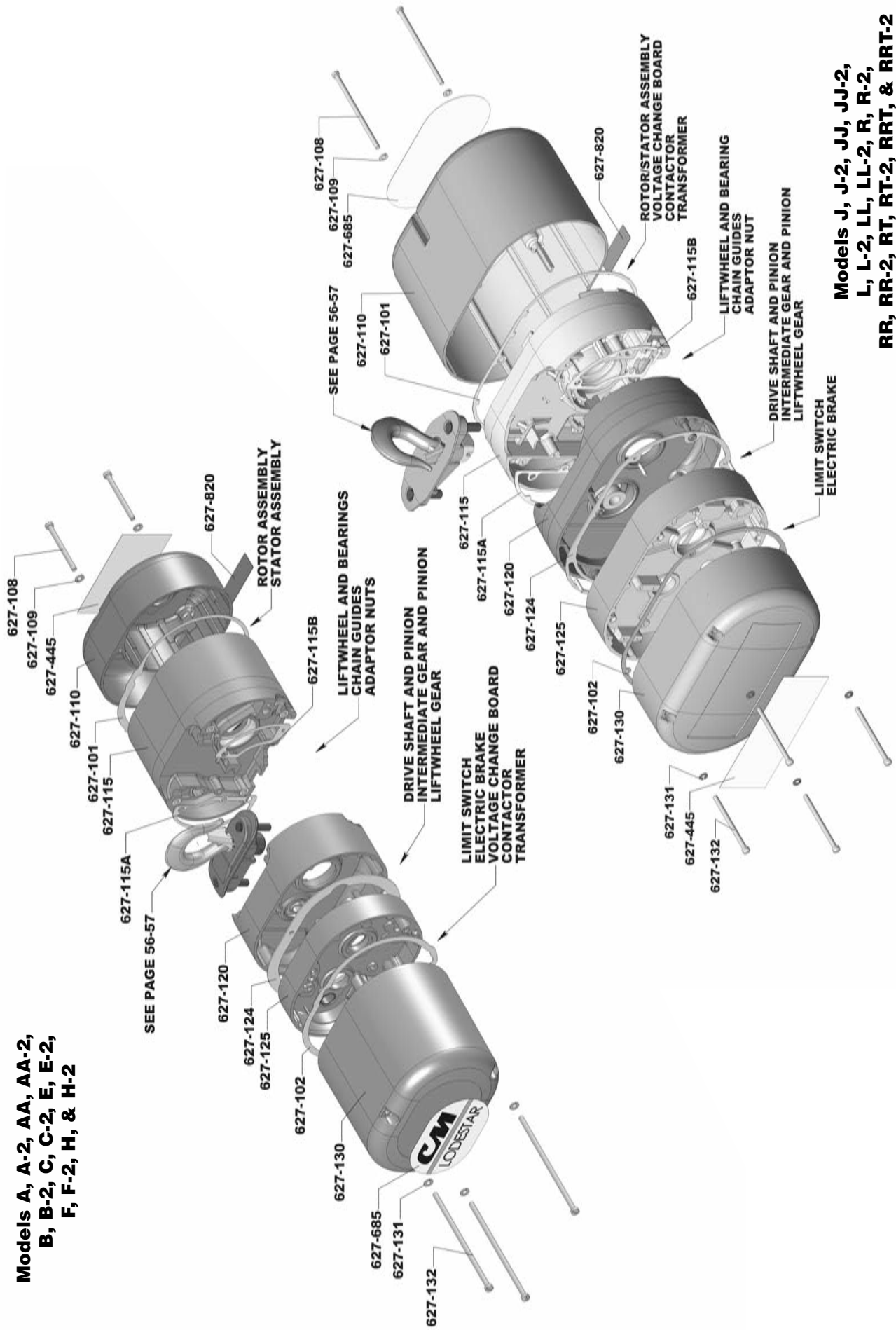
Note: CM Extraction Tool Code 27163 Can Be Ordered Separately for Removal of Individual Wires from Motor or Wiring Harness Plugs.





# HOIST FRAME COMPONENTS GENERAL LAYOUT

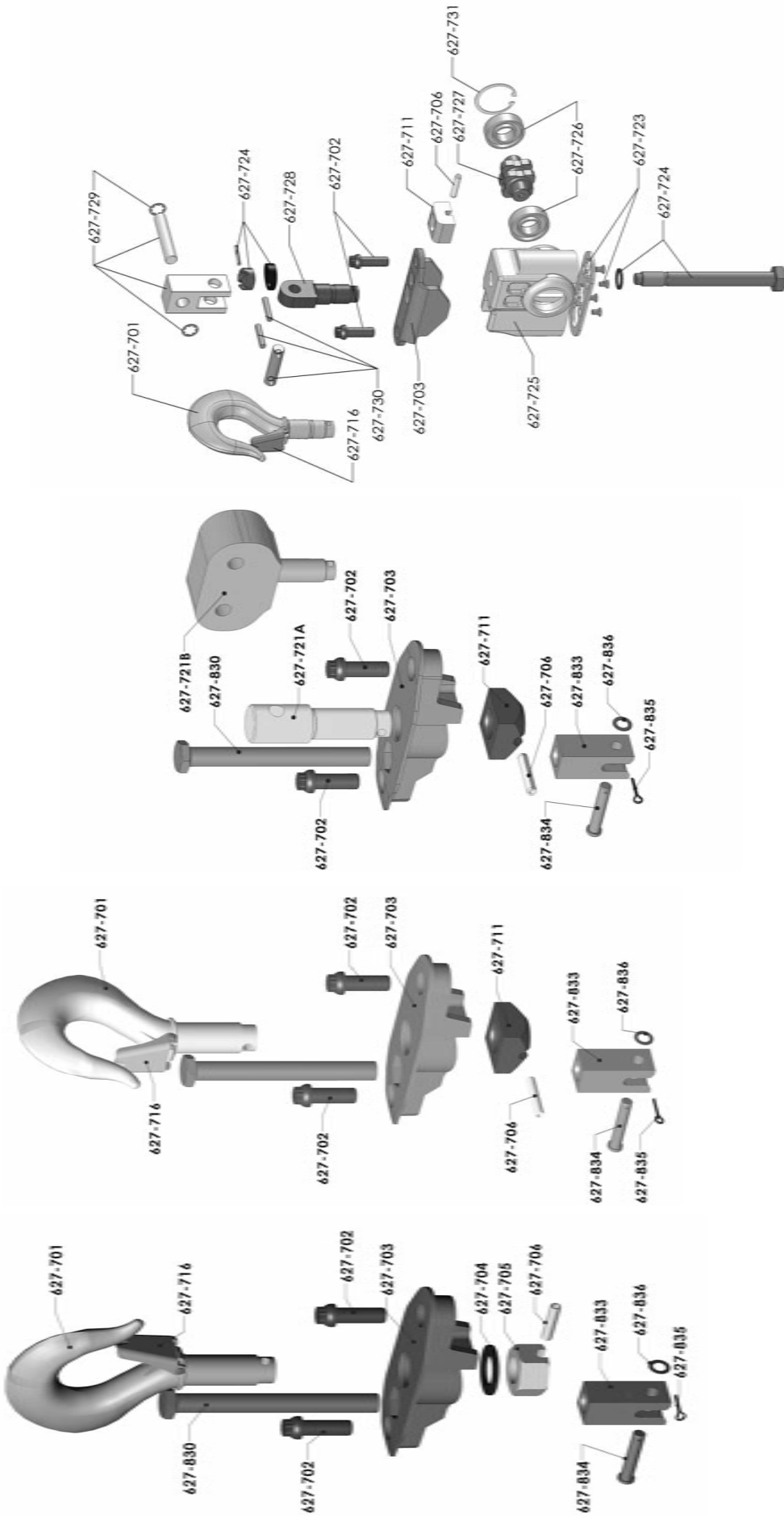
**Models A, A-2, AA, AA-2,  
B, B-2, C, C-2, E, E-2,  
F, F-2, H, & H-2**



**Models J, J-2, JJ, JJ-2,  
L, L-2, LL, LL-2, R, R-2,  
RR, RR-2, RT, RT-2, RRT, & RRT-2**

Hoist Frame Components						
Key Number	Part Name	No. Req'd	Models			
			A, A-2, AA, AA-2, B, B-2, C, C-2, F, F-2	E, E-2, H, H-2	J, J-2, JJ, JJ-2, L, L-2, LL, LL-12	R, R-2, RR, RR-2
			Part Number			
627-101	Motor Housing Cover Gasket (Weatherproof Units Only)	1	27847			35845
627-102	Back Frame Cover Gasket (Weatherproof Units Only)	1	27848			35840
627-107	Motor Cover and Back Frame Cover Alignment Pins	8	---			983784
627-108	Motor Housing Cover Screws	2	987397			987553
627-109	Motor Housing Cover Screw Lockwashers	2	982226			982226
	Standard Units		982251			982251
627-110	Motor Housing Cover	1				
	Orange		27597 (Includes 627-402, 446 & 447)			36071
	Black		27059 (Includes 627-402, 446, 447)			36076
	CSA Covers w/drain slot (Orange)		27095			36023
627-115	Motor Housing	1				
	Orange		27028C		24008C	36078
627-115A	Motor Housing Wire Way Gasket	1	27028B			24008B
627-115B	Motor Housing Spacer Gasket	1	28993			29002
627-120	Gear Housing	1	28996			29001
	Orange		28669		35620	36604
627-124	Black	1	28672		35627	---
	Gear Housing Gasket		27747			35707
627-125	Back Frame	1				
	Orange		27618 (Includes 627-123 & 627-211)			35090
627-130	Black	1	27625 (Includes 627-123 & 627-211)			35095
	Back Frame Cover					
627-131	Orange	1	28009C			36008C (Also order 627-445)
	Black		28009B		36008B (Also order 627-445)	
627-132	CSA Cover w/drain slot (Orange)	As Req'd	27097			36022 (Also order 627-445)
	Standard Units		982226 (3 Required)			982226 (4 Required)
627-133	Weatherproof Units	As Req'd	982251 (3 Required)			982251 (4 Required)
	Back Frame Cover Screw		87325 (3 Required)			968752 (4 Required)
627-245	Back Frame Seal Screw		---			982623
627-445	Capacity Label		27276 (1/8 Ton), 27277 (1/4 Ton), 27278 (1/2 Ton), 27279 (1 Ton)			35200 (1/2 Ton), 35201 (1 Ton), 35202 (2 Ton), 35203 (3 Ton)
627-685	Series Label	1	27238			36840
627-820	Electrical Warning Label	1				24842

**LODESTAR HOIST UPPER SUSPENSION**



**627-700  
COMPLETE SWIVEL HOOK  
SUSPENSION**

**627-710  
COMPLETE RIGID HOOK  
SUSPENSION**

**627-720  
COMPLETE LUG  
SUSPENSION**

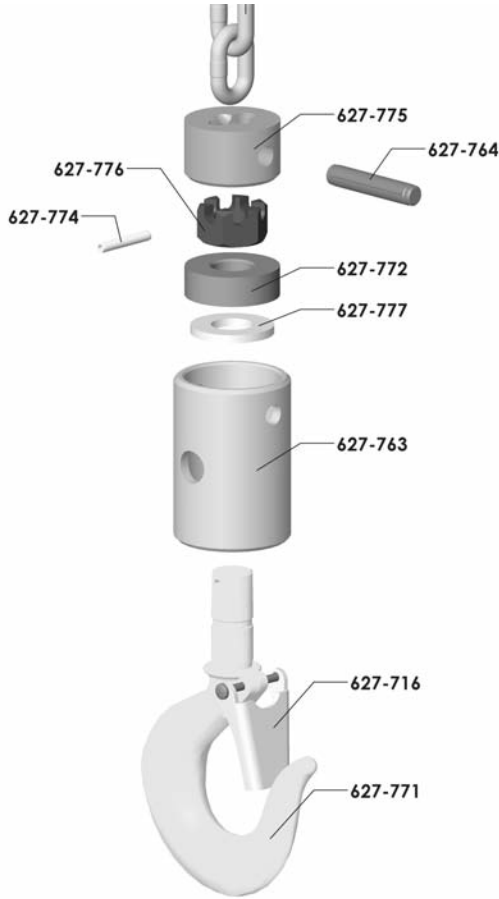
**TRIPLE REEVED SUSPENSION  
& SHEAVE HANGER**

Upper Suspension Components							
Key Number	Part Name	No. Req'd	Models				
			A, A-2, AA, AA-2, B, B-2, C, C-2, F, F-2	E, E-2, H, H-2	J, J-2, JJ, JJ-2, L, L-2, LL, LL-2	R, R-2 RR, RR-2 RT, RT-2, RRT, RRT-2	
		Part Number					
627-700	Swivel Hook Suspension (Includes 627-701 thru 627-706 for Models A, A-2, AA, AA-2, B, B-2, C, C-2, F, F-2, J, J-2, JJ, JJ-2, L, L-2, LL, & LL-2) (Includes 627-701 thru 627-706, 627-830 & 627-833 thru 627-836 for Models E, E-2, H, H-2, R, R-2, RR & R-2) (Includes 627-701 thru 627-703, 627-705 & 627-7-6 for Models RT, RT-2, RRT & RRT-2)	1	2792 (Latch Type Hook)	2793 (Latch Type Hook)	3661 (Latch Type Hook)	3660 (Latch Type Hook)	9557 (Latch Type Hook)
627-701	Upper Hook Latch Type	1	28689	28697	35617	35616	35613
627-702	Latchhook Type	1	28643	28602	36678	36680	36694
627-703	Suspension Adapter Screw	1	27529				35688
627-704	Suspension Adapter	1	27003B	27013	35740B	35741B	Order Complete Suspension
627-705	Upper Hook Washer (Swivel Hook Suspension Only)	1	27786	45930	45918	45918	---
627-706	Upper Hook Collar Nut (Swivel Hook Suspension Only)	1	27350	45385	35042	35041	36352
627-706	Upper Hook or Suspension Lug Pin (Special Alloy Steel) Specify for Rigid or Swivel Type Suspension	1	27805	45941	983763 (Rigid) 983764 (Swivel)	983761 (Rigid) 983762 (Swivel)	983762
627-710	Rigid Hook Suspension (Includes 627-701 thru 627-703, 627-706 & 627-711 for Models A, A-2, AA, AA-2, B, B-2, C, C-2, F, F-2, J, J-2, JJ, JJ-2, L, L-2, LL, & LL-2) (Includes 627-702, 627-703, 627-706, 627-711, 627-733, 627-830 & 627-833, thru 627-836 for Models E, E-2, H, H-2, R, R-2, RR & R-2) (Includes 627-702, 627-703, 627-706, 627-711, 627-728, 627-729 thru 627-730 for Models RT, RT-2, RRT & RRT-2)	1	*2788 (Latch Type Hook)	*2789 (Latch Type Hook)	*3651 (Latch Type Hook)	*3658 (Latch Type Hook)	*9559 (Latch Type Hook)
627-711	Upper Hook or Suspension Lug Collar (For Rigid Hook and Lug Suspension)	1	27361	27370	35458	35479	**36360
627-716	Latch Kit	1	45661	45662	45662	45663	45663
627-720	Lug Suspension (Includes 627-702, 627-703, 627-706 & 627-711 & 627-721A for Models A, A-2, AA, AA-2, B, B-2, C, C-2, F, F-2, J, J-2, JJ, JJ-2, L, L-2, LL, & LL-2) (Includes 627-702, 627-703, 627-706, 627-711, 627-721A, 627-830 & 627-823 thru 627-836 for Models E, E-2, H, H-2, R, R-2, RR & R-2) (Includes 627-702, 627-703, 627-7-6, 627-711, 627-728, 627-729 and 627-730 for Models RT, RT-2, RRT & RRT-2)	1	2778 for Series 635 Low Headroom Trolley	2779 for Series 635 Low Headroom Trolley	3677 for Series 635 Low Headroom Trolley	3668	9561
627-721A	Suspension Lug For Series 635 Low Headroom Trolley For Series 635 Motor Driven Trolley		27450	27452	35456	35457	
627-721B	Suspension Lug Special High Strength Bolts, Grade 6 or better required for attachment	1	27454	27455	35459	35457	
627-723	Cloverleaf Plate & Attaching Screws	1					C246
627-724	Sheave Stud Washer, Slotted Nut, Seat and Retainer Pin						C247
627-725	Sheave Hanger						36011
627-726	Sheave Hanger Bearing						88429
627-727	Upper Sheave						36350
627-728	Suspension Lug						Order Complete Suspension
627-729	Shackle w/Pin and Retainer Rings						Order Complete Suspension
627-730	Suspension Lug Pin w/Retainer Pins						Order Complete Suspension
627-731	Bearing Retainer Ring						C248
627-830	Dead End Bolt (Special Alloy)	1					40740
627-833	Dead End Block	1					35957
627-834	Dead End Pin	1					35418
627-835	Dead End Pin Cotter Pin	1					82314
627-836	Dead End Pin Washer	1					988330
							987877

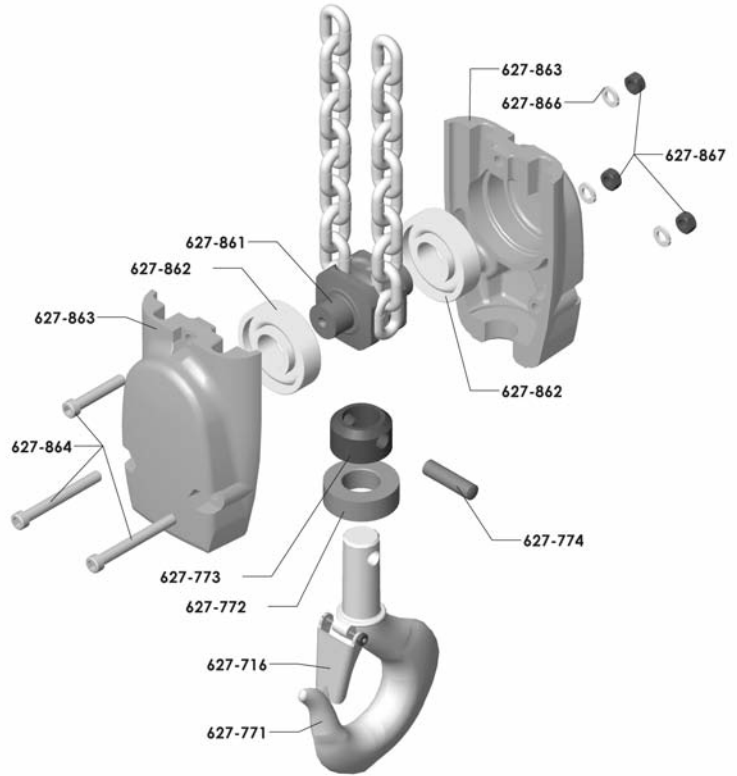
\*Contact Factory for Part Numbers of Suspensions with Latchhook Type Hooks

\*\*For Swivel Hook Nut, Part Number is 36352

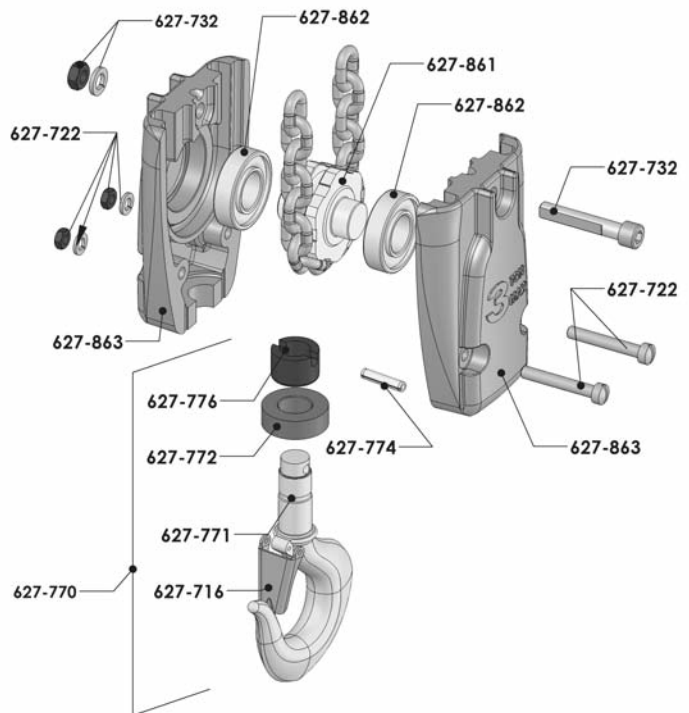
## LODESTAR LOWER HOOK BLOCK ASSEMBLY



**627-760  
COMPLETE SINGLE REEVED  
LOWER HOOK BLOCK ASSEMBLY**



**627-860  
COMPLETE DOUBLE REEVED  
LOWER HOOK BLOCK ASSEMBLY**



**627-860 TRIPLE REEVED  
LOWER HOOK BLOCK ASSEMBLY**

<b>Lower Hook Block Assembly</b>							
Key Number	Part Name	No. Req'd	A, A-2, AA, AA-2, B, B-2, C-2, F, F-2	E, E-2, H, H-2	J, J-2, JJ, JJ-2, L, L-2, LL, LL-2	R, R-2, RR, RR-2	RT, RT-2, RRT, RRT-2,
			Part Number				
627-716	Latch Kit (specify no. req'd)	-	45661	45662	45662	45663	45663
627-722	Hook Block Screws with Nuts and Lockwasher (2 Each)	1	---				C245
627-732	Dead End Screw with Nut and Lockwasher	1	---				C249
627-760	Lower Hook Block Assembly	1	**28683	---	35651	---	36607
627-763	Lower Hook Body	1	45401B	---	35370	---	
627-764	Lower Hook Chain Block Pin	1	45943	---	35790	---	
627-770	Lower Hook Block Assembly	1	-	*28665	---	*35645	*36606
627-771	Lower Hook with Latch: Latch Type Hook	1	28686	28687	35611	35612	36606
	Latchlok Type Hook	1	28604	28603	28604	36681	***
	All Other Hook Types	1	Contact Factory				
627-772	Lower Hook Thrust Bearing	1	88485	88478	88485	88505	88505
627-773	Lower Hook Collar	1	---	27359	---	35478	---
627-774	Lower Hook Pin	1	983772	45941	983772	45946	983762
627-775	Lower Hook Chain Block	1	28007	---	35026	---	
627-776	Lower Hook Nut	1	982526	---	982526	---	36352
627-777	Lower Hook Block Washer	1	945921	---	945921	---	
627-833	Dead End Block	1	---	27397	---	35418	---
627-834	Dead End Pin	1	---	82320	---	82314	---
627-835	Dead End Pin Cotter Pin	1	---	988330	---	988330	---
627-836	Dead End Pin Washer	1	---	987878	---	987877	---
627-837	Contact Block	1	---	---	---	36764	---
627-860	Lower Hook Block Assembly-Complete	1	-	**28685-	---	**35621	*36607
627-861	Hook Block Sheave	1	-	27017	---	35010	36351
627-862	Hook Block Sheave Bearing	2	-	88429	---	83674	83670
627-863	Hook Block (Order in Pairs)	2	-	27048	---	36032	36010
627-864	Hook Block Screw-Long	2	-	982066	---	982374	---
627-865	Hook Block Screw-Short	1	-	986191	---	982370	---
627-866	Hook Block Screw L.W.	3	-	940802	---	940830	---
627-867	Hook Block Screw Nut	3	-	982514	---	982445	---

\*Contact CM for Part Number of Suspension with Latchlok Type Hook.

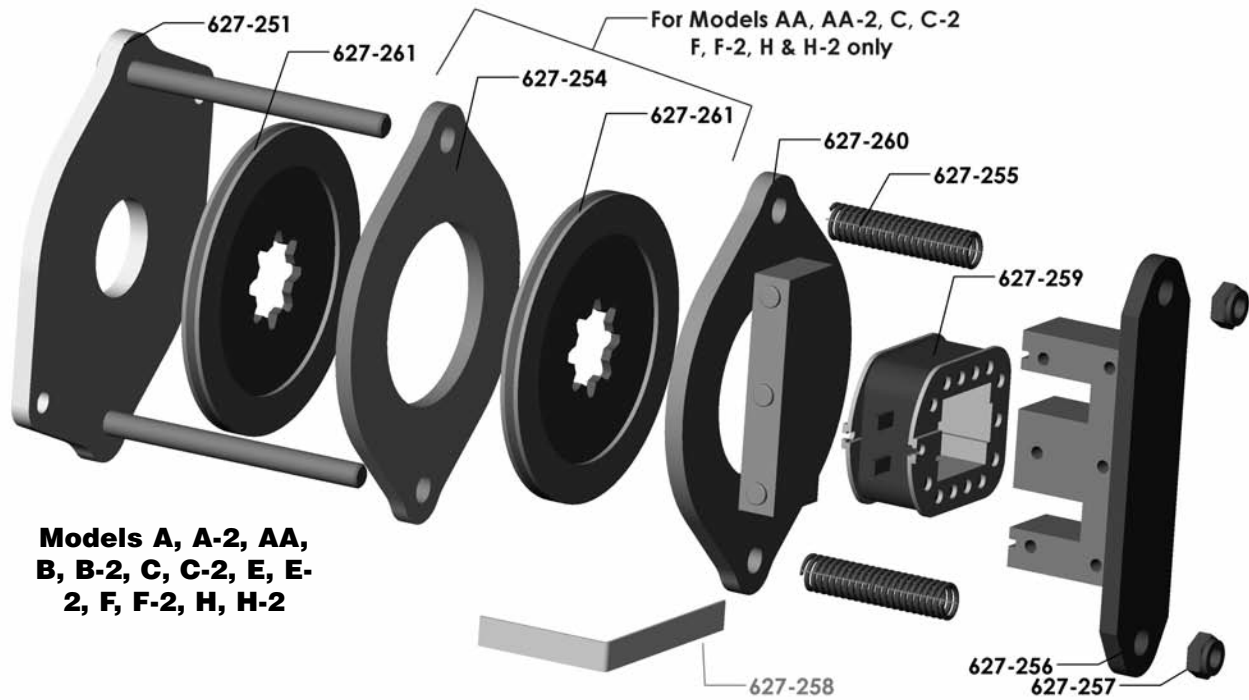
\*\*Latch Type Hook. Contact CM for Part Number of Lower Hook and Body with Latchlok Type Hook.

\*\*\*For Swivel Hook Nut, Part Number is 36352.

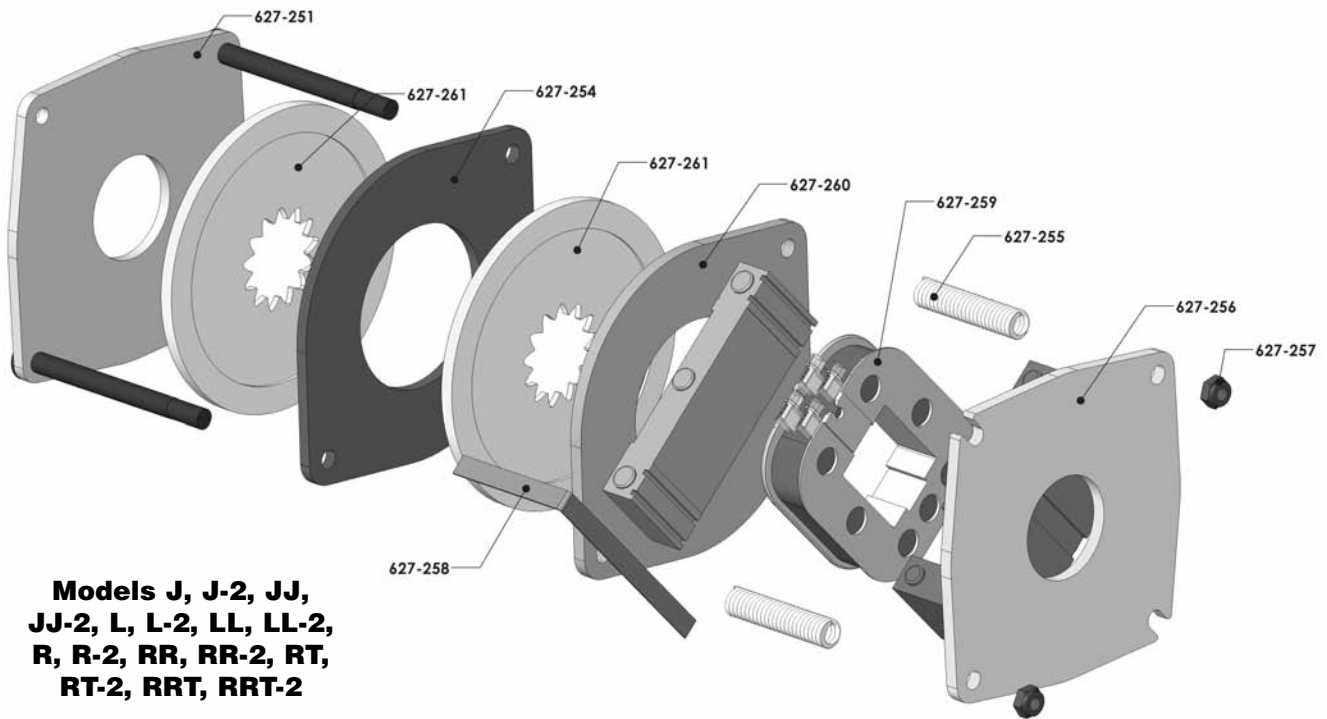


Key Number		Part Name	No. Req'd	Control End Components					Models		
				A, A-2, AA, AA-2, B, B-2, C, C-2, F, F-2	E, E-2, H, H-2	J, J-2, JJ, JJ-2, L, L-2, LL, LL-2	R, R-2, RR, RR-2	RT, RT-2, RRT, RRT-2			
627-123	Back Frame Expansion Plug	1	940837	---	---	---	---	---	---		
627-127	Back Frame Attaching Screw	3	982699	---	---	---	---	---	---		
627-127A	Back Frame Attaching Screw Lockwasher	3	940802	---	---	---	---	---	---		
627-128	Back Frame Attaching Screw	2	---	---	---	982698 (1 3/4" lg.)	---	---	---		
627-128A	Back Frame Attaching Screw Lockwasher	2	---	---	---	940830	---	---	---		
627-129	Back Frame Attaching Screw	2	---	---	---	987322 (2" lg.)	---	---	---		
627-129A	Back Frame Attaching Screw Lockwasher	2	---	---	---	940830	---	---	---		
627-220	Limit Switch Shaft & Gear Kit	1	---	---	---	36641 (See Separate Parts List on Page 64)	---	---	---		
627-222	Rotatable Limits	1	---	---	---	36656 (See Separate Parts List on Page 64)	---	---	---		
627-250	Limit Switch Kit	1	---	---	---	31636 (See Separate Parts List on Page 64)	---	---	---		
627-250	Electric Brake Assembly - Complete	1	---	---	---	See Separate Parts List on Page 62-63	---	---	---		
627-252	Brake Attaching Screw Lockwasher	-	982226 (2 Req'd)	---	---	945851 (1 Req'd)	---	---	---		
627-253	Brake Attaching Screw	-	982708 (2 Req'd)	---	---	982709 (1 Req'd)	---	---	---		
627-257	Brake Stud Nut	2	---	---	---	945840	---	---	---		
627-263	Hex Brake Stud Spring	1	57753	---	---	35704	---	---	---		
627-264	Hex Brake Stud Spring Washer	1	---	---	---	954807	---	---	---		
627-265	Hex Brake Stud	1	---	---	---	36674	---	---	---		
627-272	Hex Brake Stud Lockwasher	1	---	---	---	982232	---	---	---		
627-471	Control Cord Attaching Screw	1	---	---	---	987827	---	---	---		
627-472	Control Cord Attaching Screw Washer	1	---	---	---	927835	---	---	---		
627-473	Control Cord Attaching Screw Lockwasher	1	---	---	---	982226	---	---	---		
627-528	Transformer Attaching Screw	2	---	---	---	982888	---	---	---		
	Transformer:										
	220/230 Volt Primary w/115 Volt Secondary					29070					
	220/230 Volt Primary w/48 Volt Secondary					29071					
	220/230 Volt Primary w/24 Volt Secondary					29072					
	220/230 Volt Primary w/115 Volt Secondary with Thermal Cutout for CSA					29075					
	220/230 Volt Primary w/48 Volt Secondary with Thermal Cutout for CSA	1	See page 72-77			29076					
	220/230 Volt Primary w/24 Volt Secondary with Thermal Cutout for CSA					29077					
	110/115 Volt Primary w/48 Volt Secondary					29073					
	110/115 Volt Primary w/24 Volt Secondary					29074					
	110/115 Volt Primary w/48 Volt Secondary with Thermal Cutout for CSA					29078					
	110/115 Volt Primary w/24 Volt Secondary with Thermal Cutout for CSA					29079					
627-602	Contactor Mounting Plate Stud	3	27836	---	---	---	---	---	---		
627-604	Contactor Mounting Plate Stud Lockwasher	3	982226	---	---	---	---	---	---		
627-605	Contactor Mounting Plate Stud Nut	3	982514	---	---	---	---	---	---		
627-686	Power Cord Attaching Screw	1	---	---	---	987827	---	---	---		
627-687	Power Cord Attaching Screw Lockwasher	1	---	---	---	982226	---	---	---		
627-1017	Instruction Tag	1	---	---	---	29271 (Dual Voltage), 927992 (Single Voltage)	---	---	---		
627-1018	Power Cord	1	---	---	---	29934 (Single Phase Units) 29925 (220/230-1-50/60 Units) 27988 (Three Phase)	---	---	---		
627-1019	Control Cord Assembly	1	---	---	---	29042 (Single Phase Units) 29430 (Three Phase Units)	---	---	---		
627-1060	Terminal Strip	4	---	---	---	39460*	---	---	---		
627-1051	Terminal Strip End Clamp	2	---	---	---	39452*	---	---	---		
627-1065	Terminal Strip Mounting Bracket	1	---	---	---	31639* (220/230-1-50/60 & 110 volt Single Phase w/Transformers) 29012 All Other Units	---	---	---		
627-1066	Terminal Strip Mounting Screw	2	---	---	---	951726*	---	---	---		
627-1067	Terminal Strip Mtg. Screw Lockwasher	2	---	---	---	957855*	---	---	---		
627-1068	Terminal Strip Mtg. Bracket Screws	2	---	---	---	958805*	---	---	---		
627-1069	Terminal Strip Mtg. Bracket Screw Lockwasher	2	---	---	---	987873*	---	---	---		
627-1070	Terminal Strip Mtg. Bracket Screw Nut	2	---	---	---	988141*	---	---	---		

## Lodestar Hoist Brake Components



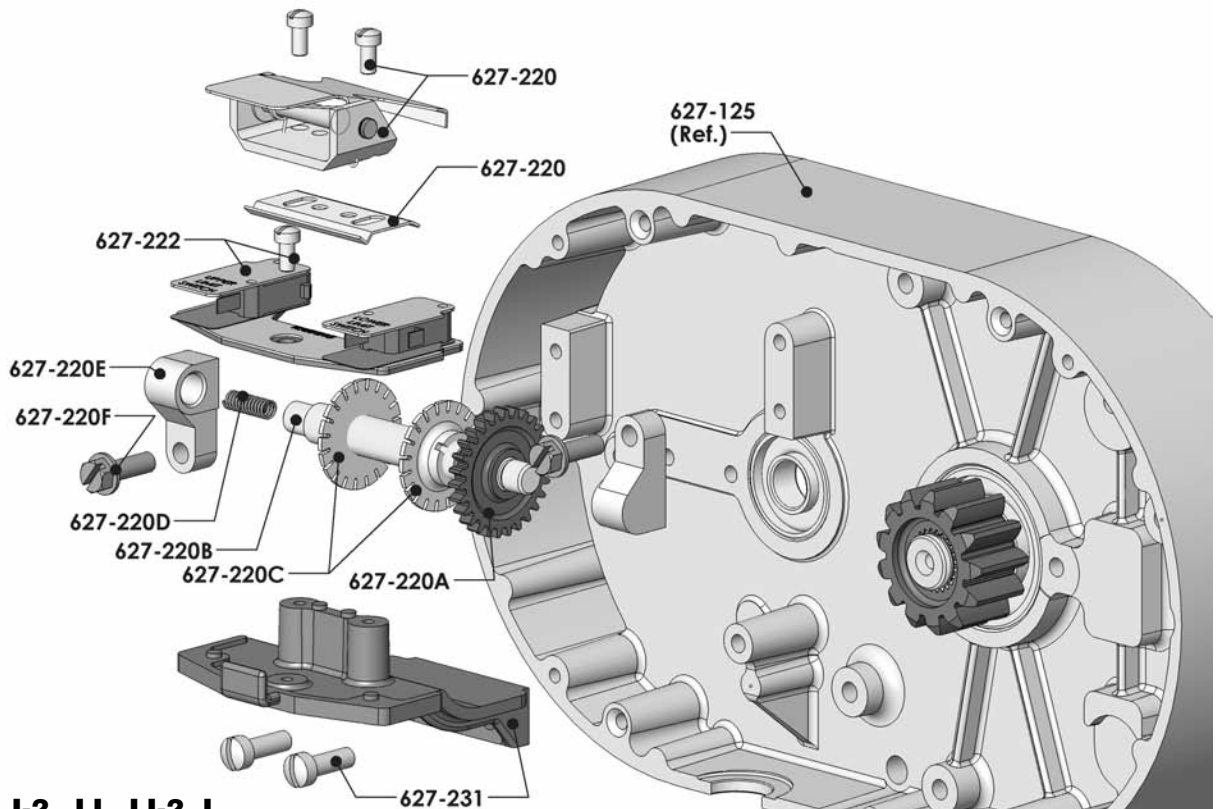
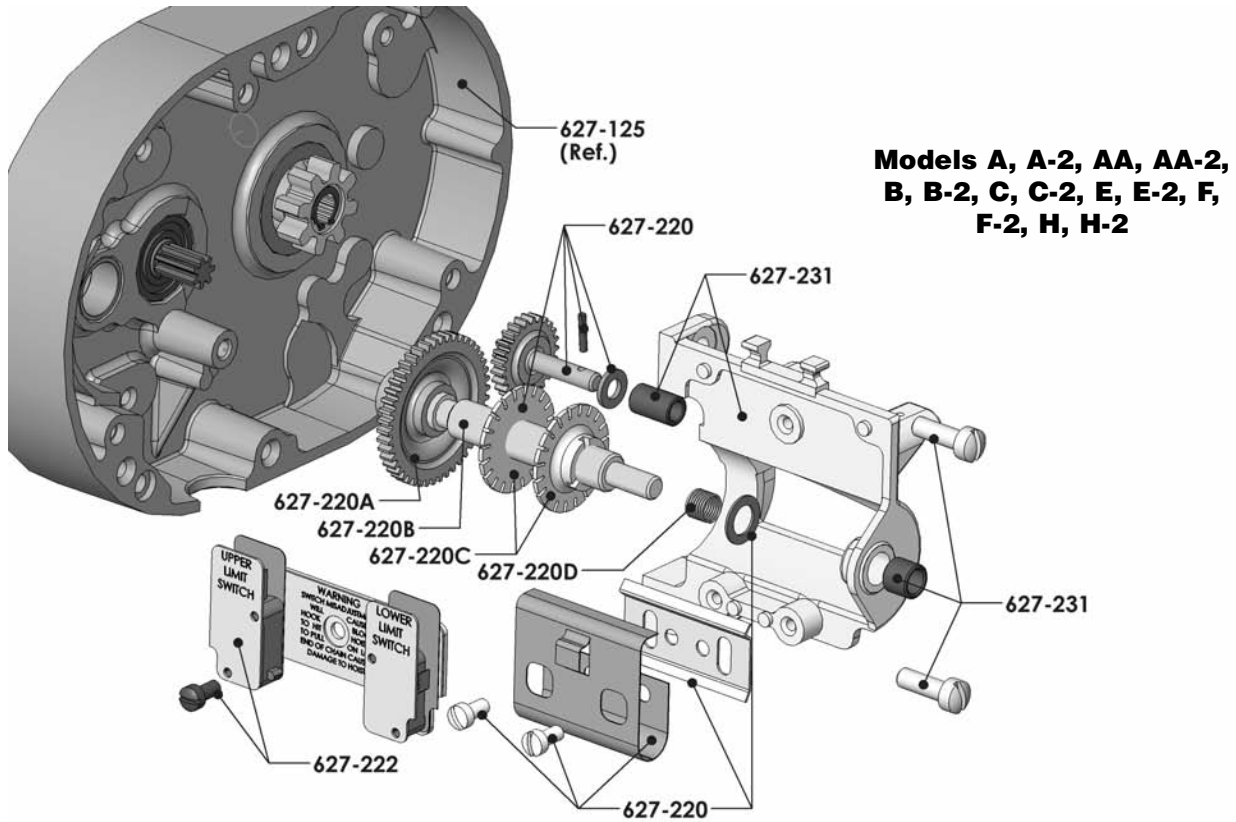
**Models A, A-2, AA,  
B, B-2, C, C-2, E, E-  
2, F, F-2, H, H-2**



**Models J, J-2, JJ,  
JJ-2, L, L-2, LL, LL-2,  
R, R-2, RR, RR-2, RT,  
RT-2, RRT, RRT-2**

<b>Brake Components</b>				
<b>Key Number</b>	<b>Part Name</b>	<b>No. Req'd</b>	<b>Models</b>	
			<b>A, A-2, AA, AA-2, B, B-2, C, C-2, F, F-2, H, H-2</b>	<b>J, J-2, JJ, JJ-2, L, L-2, LL, LL-2, R, R-2, RR, RR-2, RT, RT-2, RRT, RRT-2</b>
			<b>Part number</b>	
627-251	Brake Base Plate and Studs	1	28668	35643
627-254	Brake Intermediate Plate	1	27091 (For Models AA, AA-2, C, C-2, F, F-2, H & H-2 only)	35069
627-255	Brake Spring	2	27751 (Color Coded Blue)	35716 (Color Coded Yellow for Models J, J-2, L-2, R, R-2, RT and RT-2) 35717 (Color Coded Green for Models JJ, JJ-2, LL, LL-2, RR, RR-2, RRT and RRT-2)
627-256	Brake Field Sub-Assembly	1	28677 (Includes 627-262)	35629
627-257	Brake Stud Nut	2	345840	
627-258	Brake Coil Retainer Strap	1	57753	35704
627-259	Brake Coil	1	See Separate Listing on Page 51	
627-260	Brake Armature Assembly	1	28678	35600 (Includes 627-262)
627-261	Brake Friction Disc	-	27677 (1 Req'd for Models A, A-2, B, B-2, E, E-2) (2 req'd for Models AA, AA-2, C, C-2, F, F-2, H, H-2)	35632 (2 Req'd)

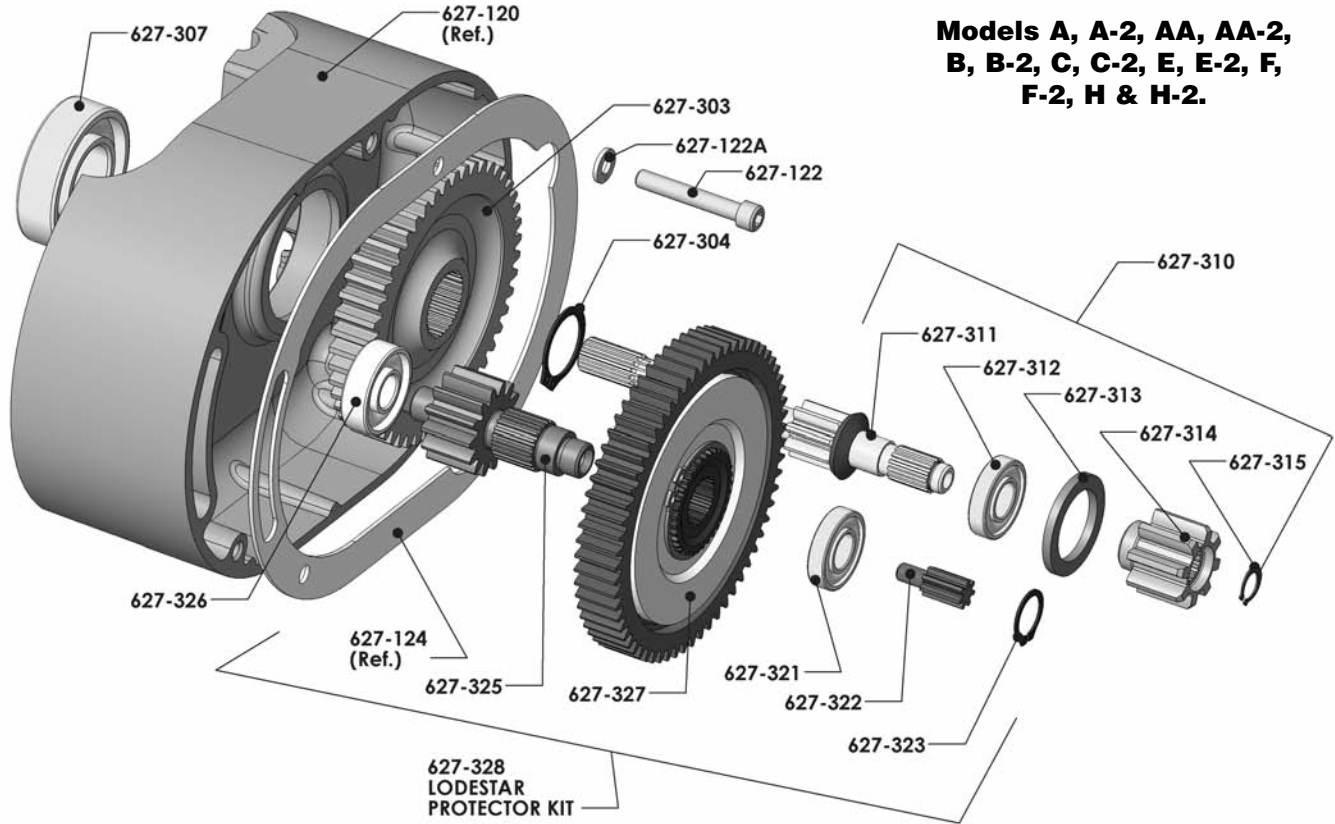
## LODESTAR HOIST LIMIT SWITCH COMPONENTS



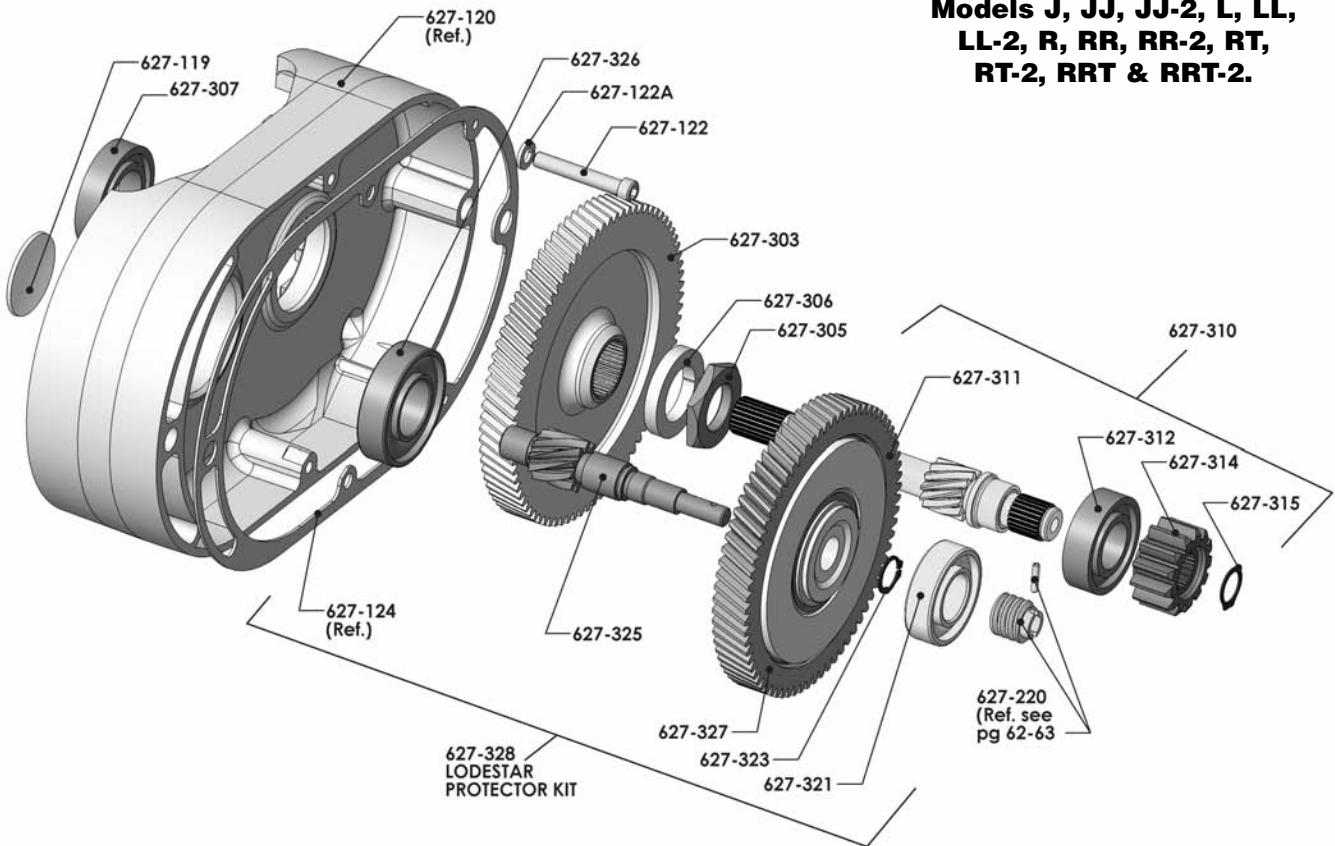
<b>Limit Switch Components</b>				
<b>Key Number</b>	<b>Part Name</b>	<b>No. Req'd</b>	<b>Models</b>	
			<b>A, A-2, AA, AA-2, B, B-2, C,C-2, E, E-2, F, F-2, H, H-2</b>	<b>J, J-2, JJ, JJ-2, L, L-2, LL, LL-2, R, R-2, RR, RR-2, RT, RT-2, RRT, RRT-2</b>
			<b>Part Number</b>	
627-220	Limit Switch Shaft and Gear Kit	1	27561	36641
	Rotatable Limit Switch		27749	36656
627-220A	Limit Switch Gear	1	27714	35753
627-220B	Limit Switch Shaft (44 thread)	1	70399	36373
	Limit Switch Shaft (56 thread)		27307	36317
	Limit Switch Shaft (64 thread)		27251	36321
627-220C	Travel Nut (44 thread)	2	70053	70053
	Travel Nut (56 thread)		36318	36318
	Travel Nut (64 thread)		36319	36319
627-220D	Spring	1	28712	35703
627-220E	Limit Switch Bearing	2	---	35751
627-220F	Mounting Screws	2	---	983656
627-222	Limit Switch Kit: Three Phase	1	31631	31636
	All Others		31631	
627-231	Limit Switch Bracket Sub-Assembly	1	27502	36644

## LODESTAR HOIST GEARING COMPONENTS

**Models A, A-2, AA, AA-2, B, B-2, C, C-2, E, E-2, F, F-2, H & H-2.**



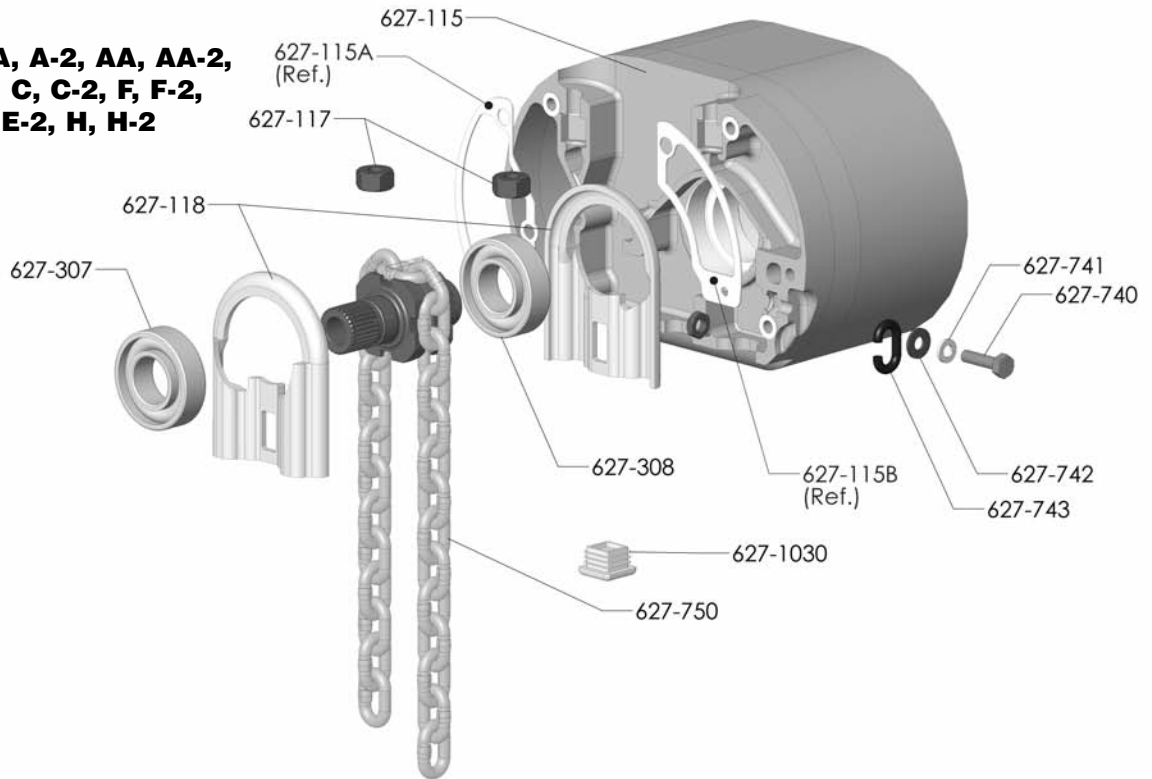
**Models J, JJ, JJ-2, L, LL, LL-2, R, RR, RR-2, RT, RT-2, RRT & RRT-2.**



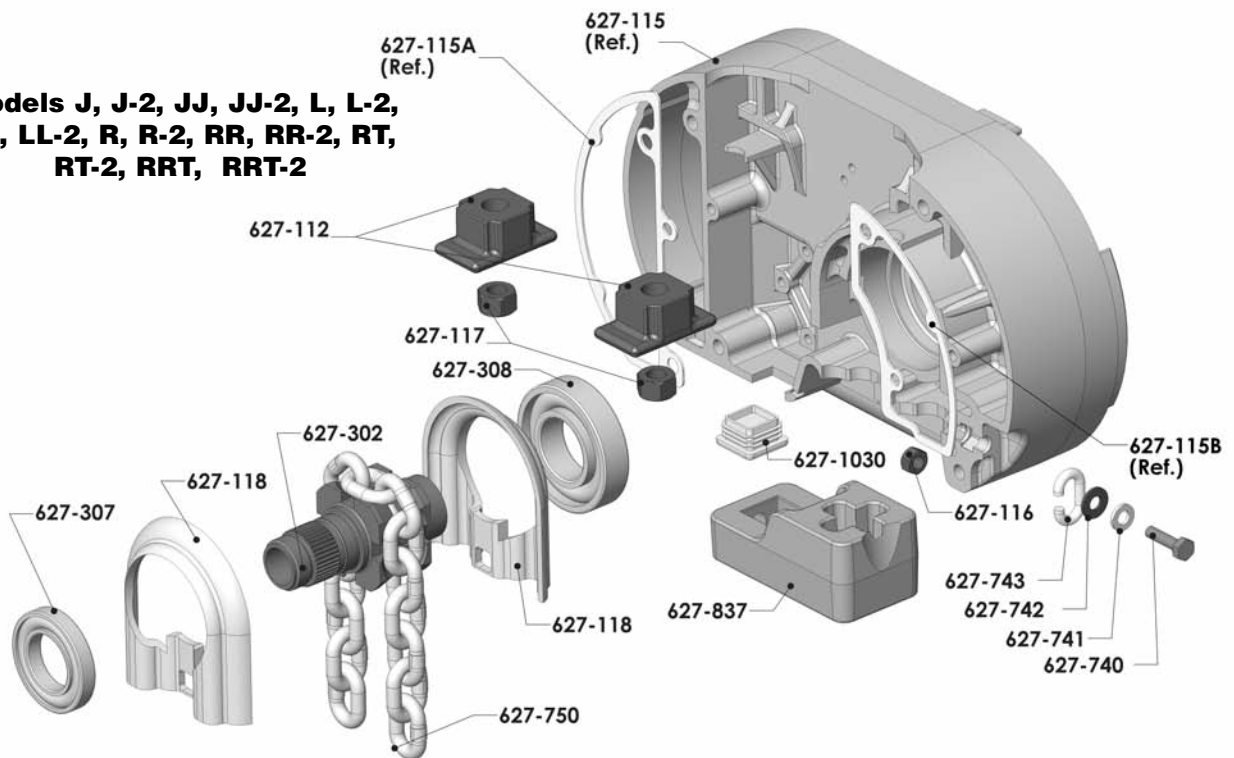
<b>Gearing Components</b>				
<b>Key Number</b>	<b>Part Name</b>	<b>No. Req'd</b>	<b>Models</b>	<b>J, J-2, JJ, JJ-2, L, L-2, LL, LL-2, R, R-2, RR, RR-2, RT, RT-2, RRT, RRT-2</b>
			<b>A, A-2, AA, AA-2, B, B-2, C, C-2, E, E-2, F, F-2, H, H-2</b>	
			<b>Part Number</b>	
627-119	Gear Housing Plug	1		935495
627-122	Gear Housing Attaching Screw	4	28830	35733
627-122A	Gear Housing Attaching Screw Lockwasher	4	940802	940830
627-303	Liftwheel Gear	1	27010 (47 teeth) Models A, A-2, C & C-2 28380 (39 teeth) Models AA & AA-2 27009 (56 teeth) Models B, B-2, E, E-2, F, F-2, H & H-2	35009 (79 teeth) Models J, J-2, L, L-2, R, R-2, RT & RT-2 35639 (60 teeth) Models JJ, JJ-2, LL, LL-2, RR, RR-2, RRT & RRT-2
627-304	Liftwheel Gear Snap Ring	1	27767	---
627-305	Liftwheel Gear Nut	1	---	35773
627-306	Liftwheel Gear Nut Washer	1	---	986576
627-307	Liftwheel Bearing-Gear End	1	88429	82002
627-310	Drive Shaft and Pinion Sub Assembly (Includes items 627-311 thru 627-315 as applicable)	1	27654 (5-43/64" lg. shaft length) Models AA, AA-2, C, C-2, F, F-2, H & H-2 27653 (5 15/64" lg shat length) Models A, A-2, B, B-2, E & E-2	35688 (18 teeth pinion & 13 teeth hub) Models J, J-2, JJ & JJ-2 35687 (12 teeth pinion & 15 teeth hub) Models L, L-2, LL, LL-2, R, R-2, RR, RR-2, R, RT, RT-2, RRT & RRT-2
627-311	Drive Shaft and Pinion	1	C204 (Models AA, AA-2, C, C-2, F, F-2, H & H-2) C203 (Models A, A-2, B, B-2, E & E-2)	35357 (18 teeth) Models J, J-2, JJ & JJ2 35356 (12 teeth) Models L, L-2, LL, LL-2, R, R-2, RR, RR-2, RT, RT-2, RRT & RRT-2
627-312	Drive Shaft and Pinion Bearing	1	82009	83691
627-313	Drive Shaft and Pinion Bearing Spacer	1	27710	---
627-314	Brake Hub	1	27852 (1 1/2 lg.) for Models AA, AA-2, C, C-2, F, F-2, H & H-2 27851 (2 1/32 lg) for Models A, A-2, B, B-2, E & E-2	35744
627-315	Brake Hub Snap Ring	1	27765	35766
627-321	Intermediate Gear and Pinion Bearing Outboard End	1	82009	88437
627-322	Limit Switch Drive Pinion	1	27712	---
627-323	Intermediate Gear Snap Ring	1	27765	35763
627-325	Intermediate Pinion	1	28624 (14 teeth) Models A, A-2, C & C-2 28625 (22 teeth) Models AA & AA-2 28623 (8teeth) Models B, B-2, E, E-2, F, F-2, H, & H-2	35351 (10 teeth) Models J, J-2, L, L-2, R, R-2, RT & RT-2 35420 (15 teeth) Models JJ, JJ-2, LL, LL-2, RR, RR-2, RRT & RRT-2
627-326	Intermediate Gear and Pinion Bearing Inboard End	1	88440	Order (1) bearing 83670 and (1) Shaft Adapter 24350)
627-327	Lodestar Protector	1	28694 (for Models A, A-2, B, B-2, E & E-2) 28693 (for Models AA & AA-2) 28695 (for Models C, C-2, F, F-2, H & H-2)	36668 (for Models J & J-2) 36669 (for Models JJ & JJ-2) 36670 (for Models L, L-2, R, R-2, RT & RT-2) 36671 (for Models LL, LL-2, RR, RR-2, RRT & RRT-2)
627-328	Lodestar Protect Kit (Includes item 627-124, 627-321, 627-322, 627-323, 627-325 & 627-327 for Models A, A-2, AA, AA-2, B, B-2, C, C-2, C-2, E, E-2, F, F-2, H & H-2 (Includes items 627-124, 627-321, 627-323, 627-325 & 627-327 for Models J, J-2, L, L-2, R, R-2, RT & RT-2. (Includes items 627-124, 627-323 & 627-327 for Models JJ, JJ-2, LL, LL-2, RR, RR-2, RRT & RRT-2	1	2876 (for Models A & A-2) 2877 (for Models AA & AA-2) 2878 (for Models B, B-2, E & E-2) 2879 (for Models C & C-2) 2880 (for Models F, F-2, H & H-2)	3601 (for Models J & J-2) 3602 (for Models JJ & JJ-2) 3603 (for Models L, L-2, R, R-2 RT & RT-2) 3604 (for Models LL, LL-2, RR, RR-2 RRT & RRT-2)

## LODESTAR HOIST LIFTWHEEL COMPONENTS

**Models A, A-2, AA, AA-2,  
B, B-2, C, C-2, F, F-2,  
E, E-2, H, H-2**



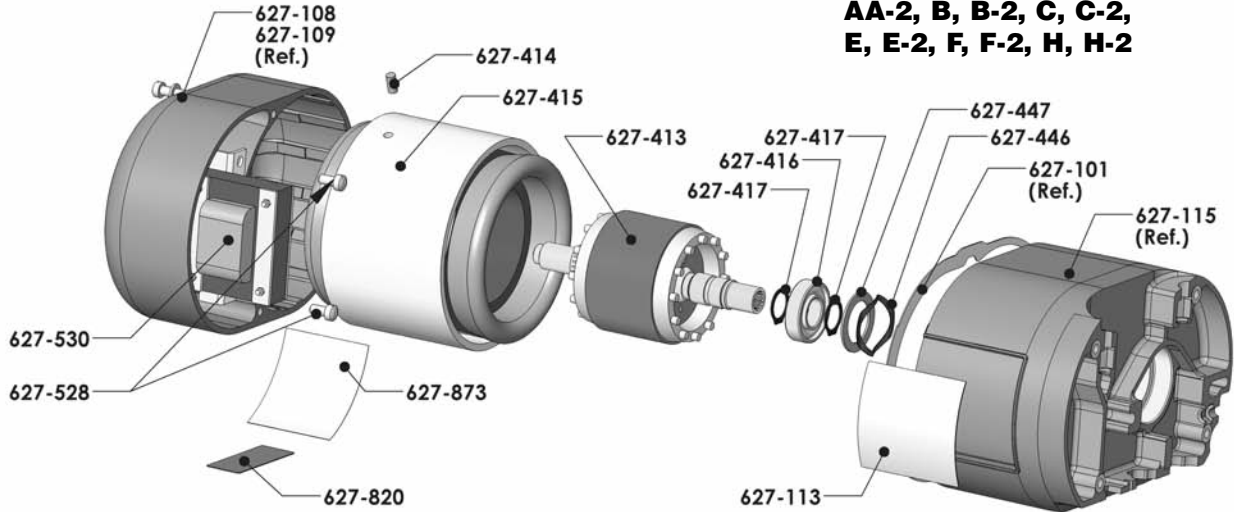
**Models J, J-2, JJ, JJ-2, L, L-2,  
LL, LL-2, R, R-2, RR, RR-2, RT,  
RT-2, RRT, RRT-2**



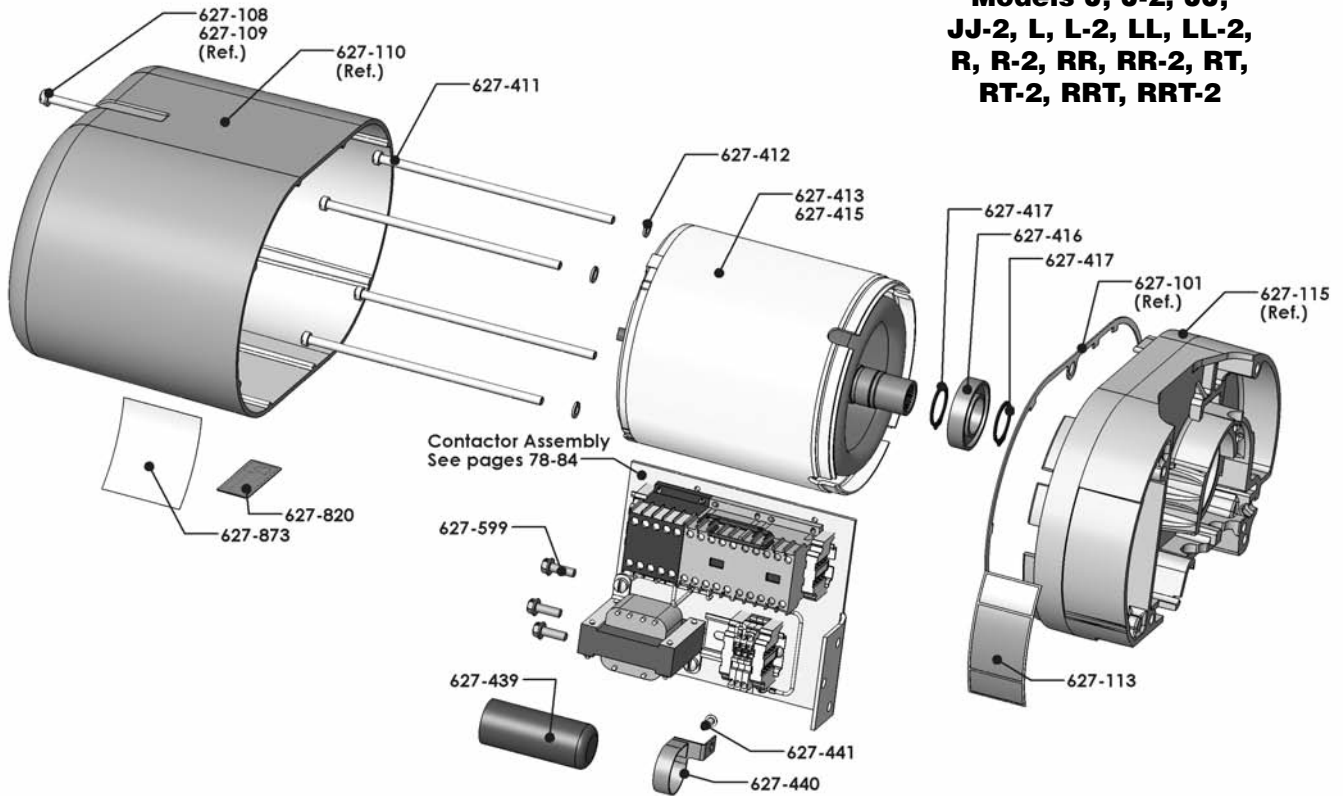
<b>Liftwheel Components</b>							
<b>Key Number</b>	<b>Part Name</b>	<b>No. Req'd</b>	<b>Models</b>				
			<b>A, A-2, AA, AA-2, B, B-2, C, C-2, F, F-2</b>	<b>E, E-2, H, H-2</b>	<b>J, J-2, JJ, JJ-2, L, L-2, LL, LL-2</b>	<b>R, R-2, RR, RR-2</b>	<b>RT, RT-2, RRT, RRT-2</b>
			<b>Part Number</b>				
627-112	Suspension Adapter Anchor	2	---		35066		35015
627-116	Loose End Nut	1	82638		82639		
627-117	Suspension Adapter Nut	2	927755		935791		
627-118	Chain Guide	1	27008		35018		
627-302	Liftwheel	1	27360		35421		
627-307	Liftwheel Bearing-Gear End	1	88429		82002		
627-308	Liftwheel Bearing-Motor End	1	88429		83669		
627-740	Loose End Screw	1	927764		987210		
627-741	Loose End Screw Lockwasher	1	982226		945851		
627-742	Loose End Screw Washer	1	954802		954807		
627-743	Loose End Link	1	27351		35367		
627-750	Load Chain (Specify Qty Required)	As Req'd.					
	Burnished in Oil		85889		85979		
	Zinc		85944		85949		
	Niclad		85915		85916		
	Stainless Steel		85952		n/a		
	Zinc Phosphate		85965		85966		
627-837	Contact Block	1	---	---	---	36764	---
627-1030	Dead End Block Hole Plug (For use on Entertainment/Black Units Only)	1	27223	---	---	35291	---

## LODESTAR HOIST MOTOR END COMPONENTS

**Models A, A-2, AA,  
AA-2, B, B-2, C, C-2,  
E, E-2, F, F-2, H, H-2**



**Models J, J-2, JJ,  
JJ-2, L, L-2, LL, LL-2,  
R, R-2, RR, RR-2, RT,  
RT-2, RRT, RRT-2**

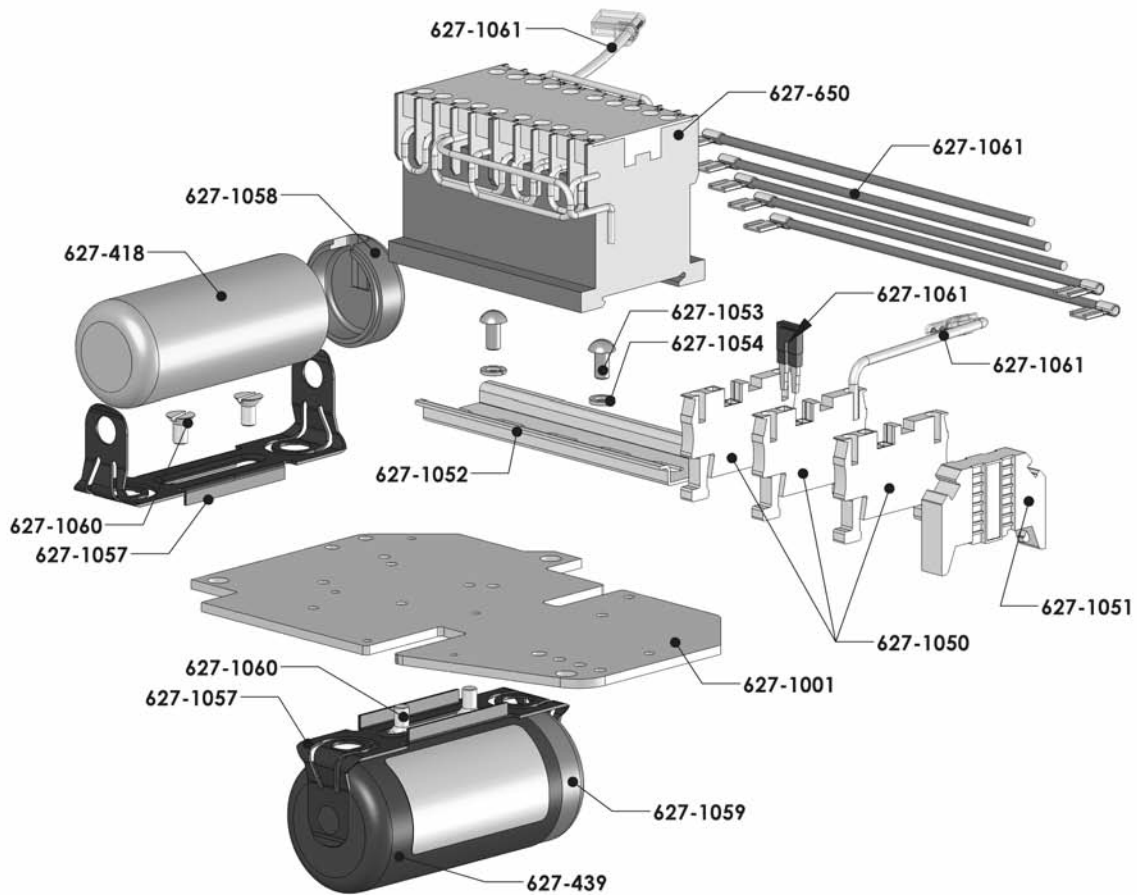


### Motor End Components

Key Number	Part Name	No. Req'd	A, A-2, AA, AA-2, B, B-2, C, C-2, E, E-2, F, F-2, H, H-2	J, J-2, JJ, JJ-2, L, L-2, LL, LL-2, R, R-2, RR, RR-2, RT, RT-2, RRT, RRT-2
			Part Number	
627-113	Identification Plate	1	Contact Factory	
627-411	Motor Attaching Screw	4	---	See Pg. 51
627-412	Motor Attaching Screw Lockwasher	4		982226
627-413	Rotor and Shaft Sub Assembly	1	See Pg. 51	---
627-414	Stator Pin	1	983541	---
627-415	Stator	1	See Pg. 51	
627-415A	Motor End Plate	1	---	36023
627-416	Motor Shaft Bearing - Inboard End	1	82003	82004
627-417	Motor Shaft Bearing Snap Ring-Inboard End	2	27790	35764
627-439	Solid State Reversing Switch	1	27257 (115/230-1-50/60 Units)	35499 (115/230-1-50/60 Units)
627-440	Switch Clamp	1	27295	27275
627-441	Switch Clamp Screw	1	982873	
627-446	Rotor Wave Washer	1	27292	---
627-447	Rotor Bearing Spacer	1	27291	Contact Factory
627-528	Transformer Attaching Screws	2	982688	
627-530	Transformer & Bracket Mounting Assembly			
	V1 Single Phase Units 110/115-1-50/60 *Units w/Transformer	1	115 Volt Primary with 48 Volt Secondary code 29847	
			115 Volt Primary with 24 Volt Secondary code 29849	
			115 Volt Primary with 48 Volt Secondary w/Thermal Cutout for CSA use code 29848	
			115 Volt Primary with 24 Volt Secondary w/Thermal Cutout for CSA use code 28999	
			220/230 Volt Primary with 115 Volt Secondary code 27771	
			220/230 Volt Primary with 48 Volt Secondary code 28850	
	V1 Single Phase Units 220/230-1-50/60	1	220/230 Volt Primary with 24 Volt Secondary code 27780	
			220/230 Volt Primary with 115 Volt Secondary w/Thermal Cutout for CSA use code 27778	
			220/230 Volt Primary with 48 Volt Secondary w/Thermal Cutout for CSA use code 27777	
			220/230 Volt Primary with 24 Volt Secondary w/Thermal Cutout for CSA use code 28980	
			230/460 Volt Primary with 115 Volt Secondary code 27771	
			230/460 Volt Primary with 48 Volt Secondary code 28850	
	V1 Three Phase Units *All Three Phase Voltages	1	230/460 Volt Primary with 24 Volt Secondary code 27780	
			230/460 Volt Primary with 115 Volt Secondary w/Thermal Cutout for CSA use code 27778	
			230/460 Volt Primary with 48 Volt Secondary w/Thermal Cutout for CSA use code 27777	
			230/460 Volt Primary with 24 Volt Secondary w/Thermal Cutout for CSA use code 28980	
			550/575 Volt Primary with 115 Volt Secondary w/Thermal Cutout for CSA use code 27792	
			550/575 Volt Primary with 48 Volt Secondary w/Thermal Cutout for CSA use code 28798	
			550/575 Volt Primary with 24 Volt Secondary w/Thermal Cutout for CSA use code 28796	
627-599	Contacting Mounting Plate Screw	3	---	983656
627-820	Electrical Warning Label	1	24842	
627-873	Chain Label	1	928894	

## CONTACTOR PLATE ASSEMBLIES

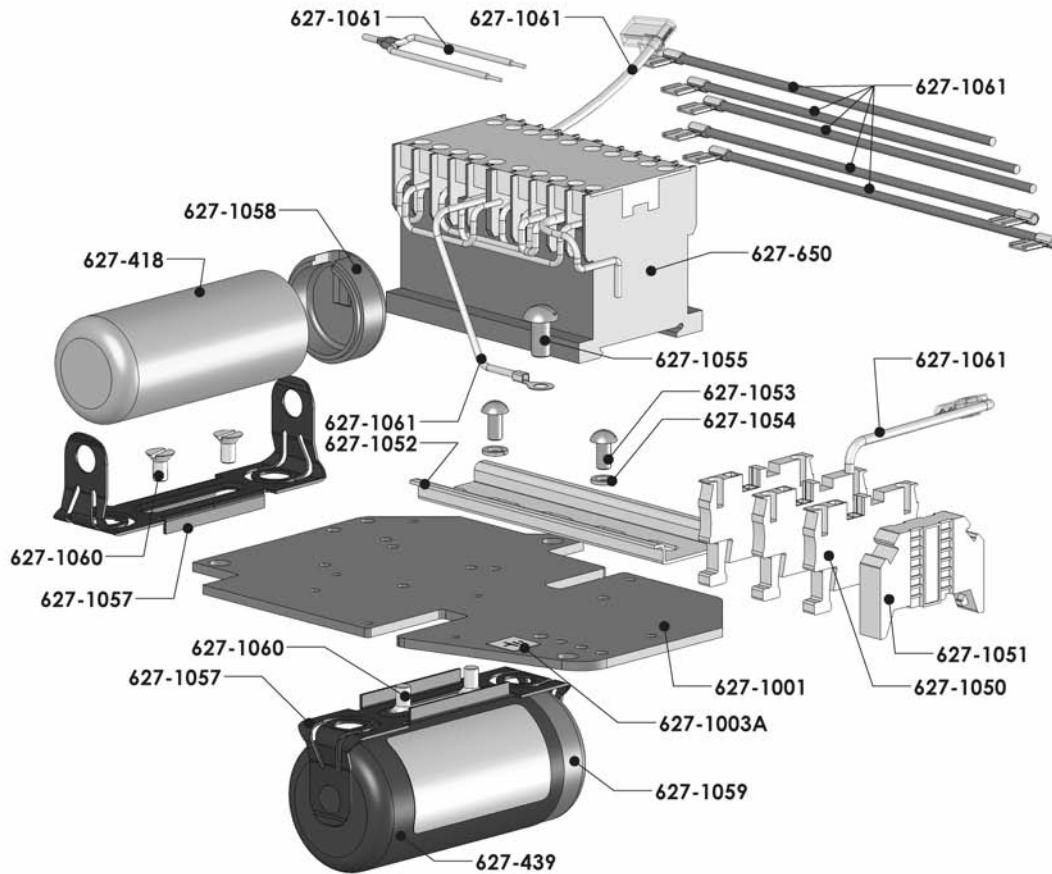
MODELS A, AA, B, C, E, F & H  
SINGLE PHASE  
110/115-1/50/60



Key Number	Part Name	No. Req'd	Part Number
627-418	Capacitor	1	27716
627-439	Solid State Reversing Switch	1	27257
627-650	Hoist Reversing Contactor	1	28553 (115 Volt Coil)
627-1001	Contactor Mounting Plate	1	31633
627-1050	Terminal Strip	3	29014
627-1051	Terminal Strip End Clamp	1	29015
627-1052	Din Rail Mounting Bracket	1	29312
627-1053	Din Rail Mounting Bracket Screw	2	982686
627-1054	Din Rail Mounting Bracket Screw Lockwasher	2	987873
627-1057	Capacitor Mounting Bracket or Solid State Reversing Switch Mounting Bracket	2	27910
627-1058	Insulating Capacitor Cap	1	29910
627-1059	Insulating Solid State Reversing Switch Cap	1	27925
627-1060	Capacitor Mounting Bracket or Solid State Reversing Switch Mounting Bracket Screw	4	982696
627-1061	Jumpers:		
	R5	1	29911
	R6	1	29912
	R7	1	29913
	R8	1	29914
	R14	1	27156
	B1	1	29915
	B2	1	29916
	Bridge	1	29047
Wiring Harness	1	29926	

## CONTACTOR PLATE ASSEMBLIES

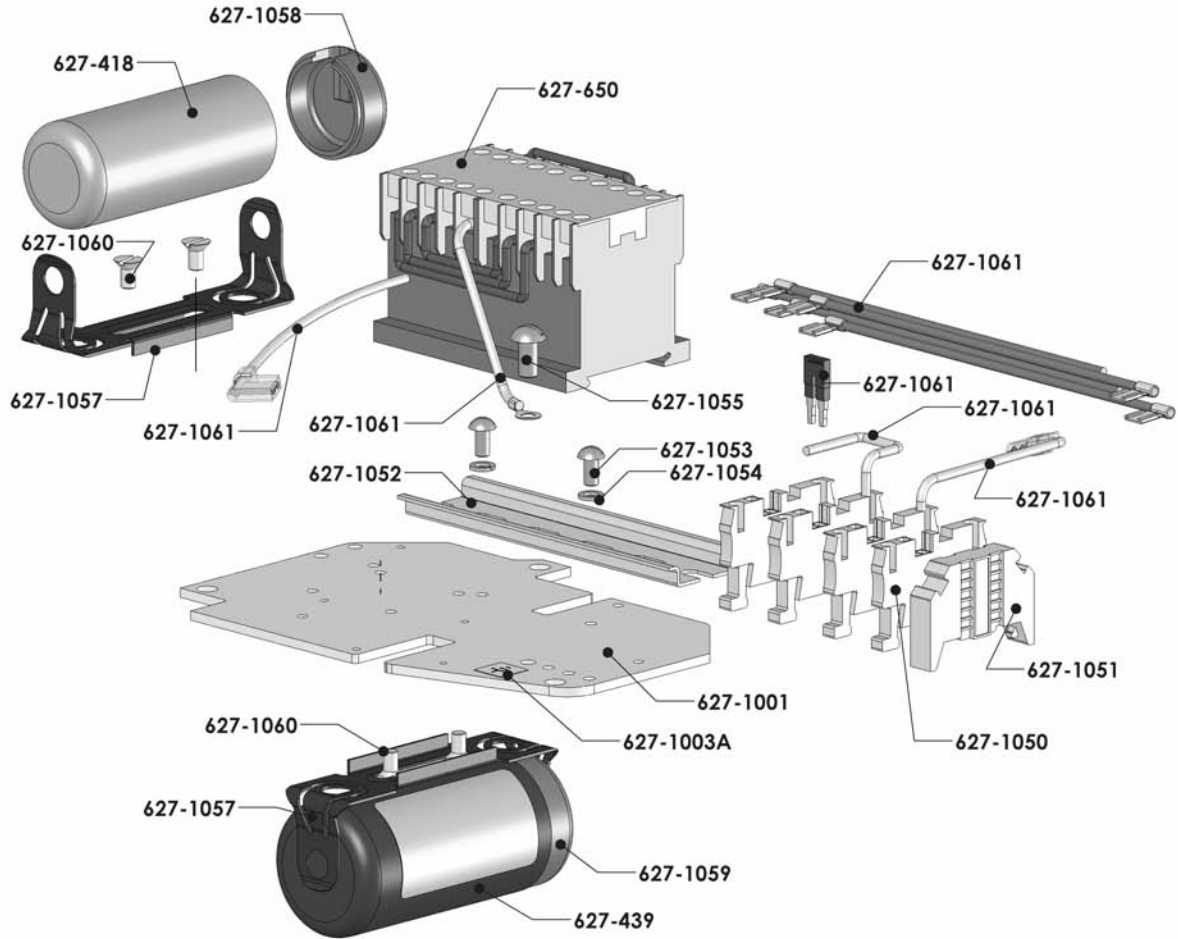
MODELS A, AA, B, C, E, F & H  
SINGLE PHASE WITH TRANSFORMER  
110/115-1/50/60



Key Number	Part Name	No. Req'd	Part Number
627-418	Capacitor	1	27716
627-439	Solid State Reversing Switch	1	27257
627-650	Hoist Reversing Contactor	1	28545 (48 Volt Coil) 28552 (24 Volt Coil)
627-1001	Contactor Mounting Plate	1	31633
627-1003A	Ground Label	1	20940
627-1050	Terminal Strip	3	29014
627-1051	Terminal Strip End Clamp	1	29015
627-1052	Din Rail Mounting Bracket	1	29312
627-1053	Din Rail Mounting Bracket Screw	2	982686
627-1054	Din Rail Mounting Bracket Screw Lockwasher	2	987873
627-1055	Ground Screw	1	987827
627-1057	Capacitor Mounting Bracket or Solid State Reversing Switch Mounting Bracket	2	27910
627-1058	Insulating Capacitor Cap	1	29910
627-1059	Insulating Solid State Reversing Switch Cap	1	27925
627-1060	Capacitor Mounting Bracket or Solid State Reversing Switch Mounting Bracket Screw	4	982696
627-1061	Jumpers:		
	R5	1	29911
	R6	1	29912
	R7	1	29913
	R8	1	29914
	R14	1	27156
	B1	1	29915
	B2	1	29916
	G-Y	1	27189
	Jumper Assembly	1	29929
Wiring Harness	1	29927	

## CONTACTOR PLATE ASSEMBLIES

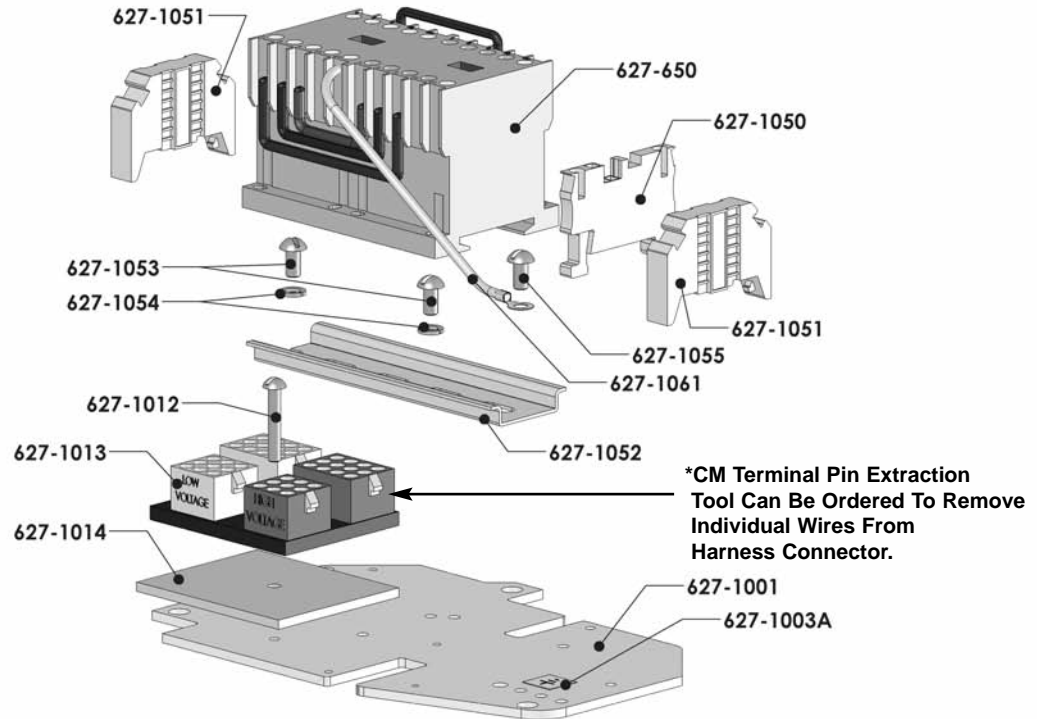
MODELS A, AA, B, C, E, F & H  
SINGLE PHASE  
220/230-1-50/60



Key Number	Part Name	No. Req'd	Part Number
627-418	Capacitor	1	27716
627-439	Solid State Reversing Switch	1	27257
627-650	Hoist Reversing Contactor	1	28553 (110 Volt Coil) 28545 (48 Volt Coil) 28552 (24 Volt Coil)
627-1001	Contactor Mounting Plate	1	31633
627-1003A	Ground Label	1	20940
627-1050	Terminal Strip	4	29014
627-1051	Terminal Strip End Clamp	1	29015
627-1052	Din Rail Mounting Bracket	1	29312
627-1053	Din Rail Mounting Bracket Screw	2	982686
627-1054	Din Rail Mounting Bracket Screw Lockwasher	2	987873
627-1055	Ground Screw	1	987827
627-1057	Capacitor Mounting Bracket or Solid State Reversing Switch Mounting Bracket	2	27910
627-1058	Insulating Capacitor Cap	1	29910
627-1059	Insulating Solid State Reversing Switch Cap	1	27925
627-1060	Capacitor Mounting Bracket or Solid State Reversing Switch Mounting Bracket Screw	4	982696
627-1061	Jumpers:		
	R5	1	29911
	R6	1	29912
	R7	1	29913
	R8	1	29914
	R14	1	27156
	B1	1	29915
	B2	1	29916
	Bridge	1	27047
	Contactor Jumper	1	51547
	G-Y	1	27189
Wiring Harness	1	29928	

## CONTACTOR PLATE ASSEMBLIES

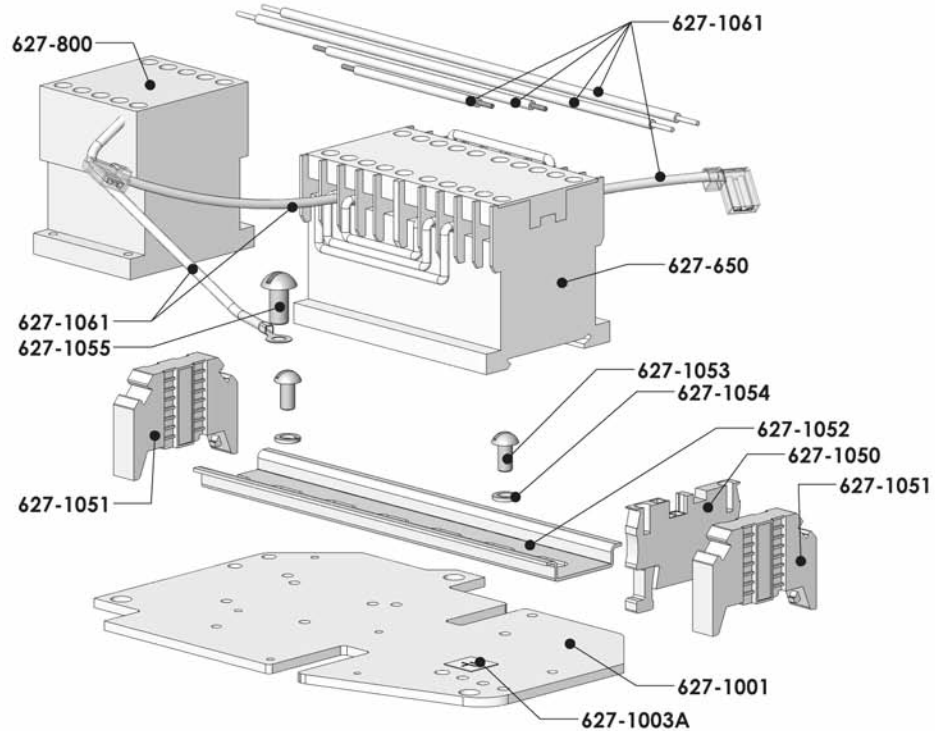
MODELS A, AA, B, C, E, F & H  
3 PHASE, DUAL VOLTAGE  
220/230-3-50/60  
380/415/460-3-50/60



Key Number	Part Name	No. Req'd	Part Number
627-650	Hoist Reversing Contactor	1	24799 (110 Volt Coil) 24797 (48 Volt Coil) 28860 (24 Volt Coil)
627-1001	Contactor Mounting Plate	1	31633
627-1003A	Ground Label	1	20940
627-1012	Voltage Change Board Mounting Screw	1	987862
627-1013	Voltage Change Board	1	27672
627-1014	Voltage Change Board Insulator	1	27685
627-1050	Terminal Strip	1	29014
627-1051	Terminal Strip End Clamp	2	29015
627-1052	Din Rail Mounting Bracket	1	29312
627-1053	Din Rail Mounting Bracket Screw	2	982686
627-1054	Din Rail Mounting Bracket Screw Lockwasher	2	987873
627-1055	Ground Screw	1	987827
627-1061	Jumper: G-Y Motor Wiring Harness Wiring Harness	1 1 1	27189 27603 29801
*627-1063	CM Terminal Pin Extraction Tool (Not Shown)	1	27163

## CONTACTOR PLATE ASSEMBLIES

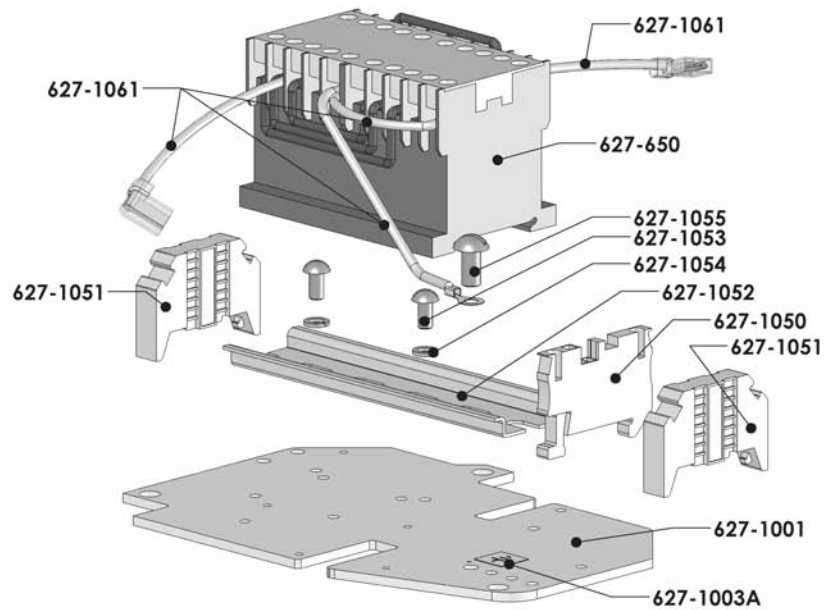
Models A-2, AA-2, B-2, C-2, E-2, F-2 & H2  
 3 PHASE, TWO SPEED  
 220/230-3-50/60  
 380/415/460-3-50/60  
 550/575-3-50/60



Key Number	Part Name	No. Req'd	Part Number
627-650	Hoist Reversing Contactor	1	28553 (115 Volt Coil) 24797 (48 Volt Coil) 28860 (24 Volt Coil)
627-800	Hoist Speed Selecting Contactor	1	28870 (115 Volt Coil) 28871 (48 Volt Coil) 28878 (24 Volt Coil)
627-1001	Contactor Mounting Plate	1	31633
627-1003A	Ground Label	1	20940
627-1050	Terminal Strip	1	29014
627-1051	Terminal Strip End Clamp	2	29015
627-1052	Din Rail Mounting Bracket	1	29312
627-1053	Din Rail Mounting Bracket Screw	2	982686
627-1054	Din Rail Mounting Bracket Screw Lockwasher	2	987873
627-1055	Ground Screw	1	987827
627-1061	Jumpers: R10 R13 B1 B2 Contactor Jumper Contactor Jumper G-Y Wiring Harness	1 1 1 1 2 2 1 1	27609 27610 29915 29916 51845 51847 27189 29802

## CONTACTOR PLATE ASSEMBLIES

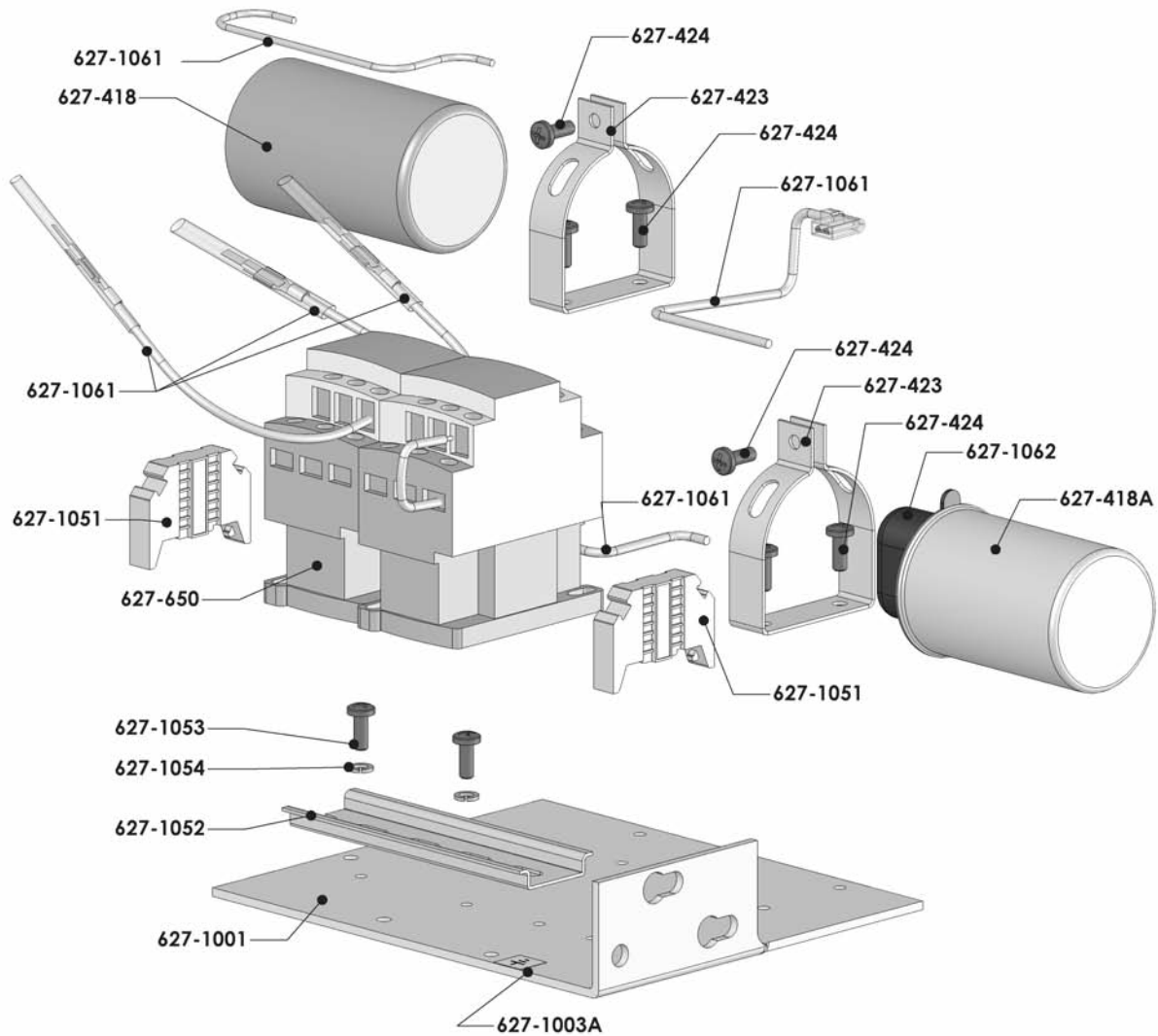
Models A, AA, B, C, E, F & H  
3 PHASE  
550/575-3-50/60



Key Number	Part Name	No. Req'd	Part Number
627-650	Hoist Reversing Contactor	1	24799(115 Volt Coil) 24797 (48 Volt Coil) 28860 (24 Volt Coil)
627-1001	Contactor Mounting Plate	1	31633
627-1003A	Ground Label	1	20940
627-1050	Terminal Strip	1	29014
627-1051	Terminal Strip End Clamp	2	29015
627-1052	Din Rail Mounting Bracket	1	29312
627-1053	Din Rail Mounting Bracket Screw	2	982686
627-1054	Din Rail Mounting Bracket Screw Lockwasher	2	987873
627-1055	Ground Screw	1	987827
627-1061	Jumpers:		
	B1	1	29915
	B2	1	29916
	Contactor Jumper	1	51847
	G-Y	1	27189
	Wiring Harness	1	27160

## CONTACTOR PLATE ASSEMBLIES

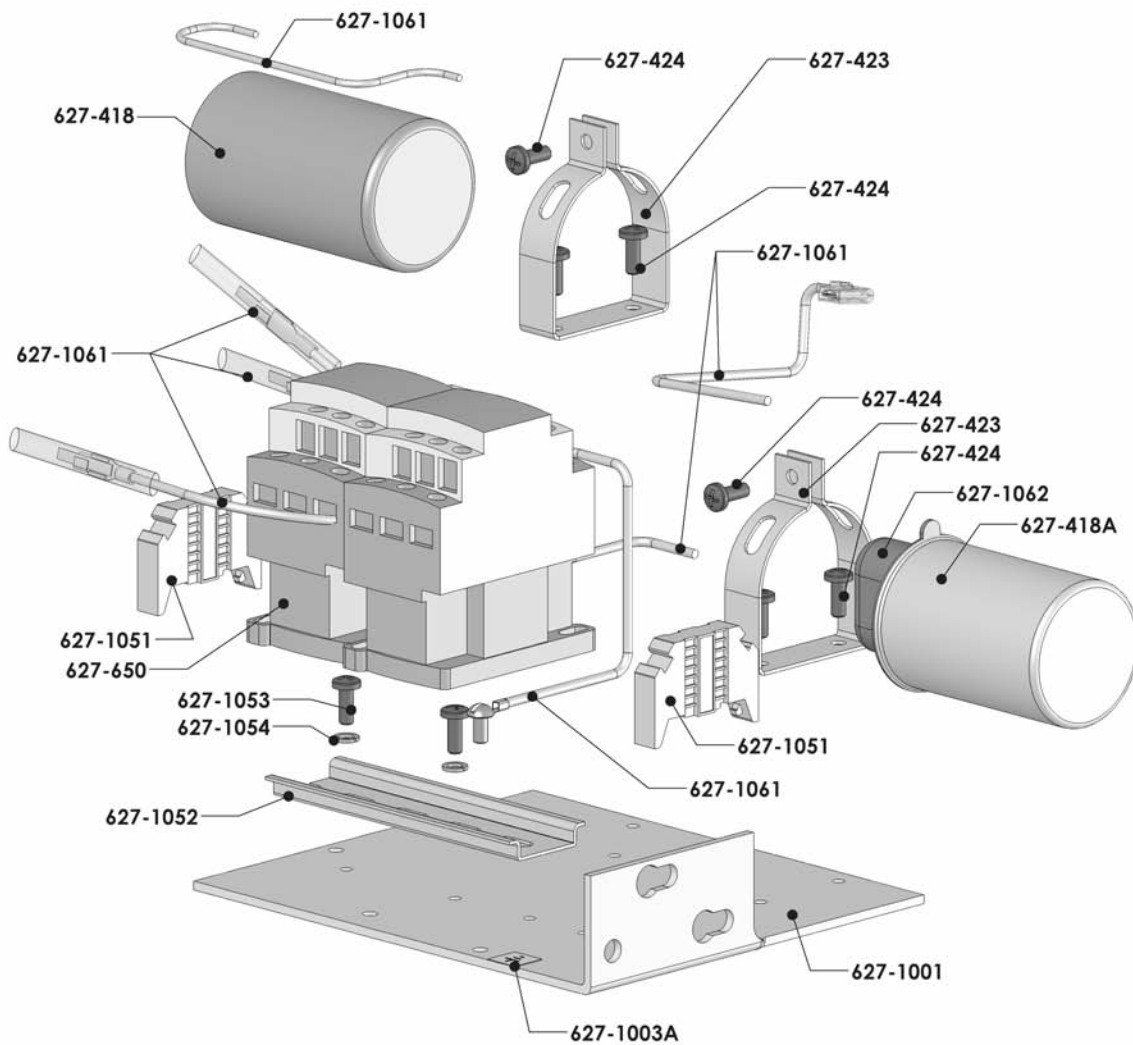
MODELS J, L, R, & RT  
SINGLE PHASE  
110/115-1-50/60



Key Number	Part Name	No. Req'd	Part Number
627-418	Start Capacitor	1	35279
627-418A	Run Capacitor	1	35278
627-423	Start/Run Capacitor Mounting Clamp	2	35268
627-424	Mounting Clamp Screw	6	982873
627-650	Hoist Reversing Contactor	1	27142 (115 Volt Coil) 27138 (48 Volt Coil) 27139 (24 Volt Coil)
627-1001	Contactor Mounting Plate	1	29013
627-1003A	Ground Label	1	20940
627-1051	Terminal Strip End Clamp	2	29015
627-1052	Din Rail Mounting Bracket	1	29009
627-1053	Din Rail Mounting Bracket Screw	2	982686
627-1054	Din Rail Mounting Bracket Screw Lockwasher	2	987873
627-1061	Jumpers: R2 R3 R4 R5 R10 Contactor Jumper Wiring Harness	1 1 1 1 1 1 1	29036 29037 29035 29038 29034 51845 29039
627-1062	Rubber Insulating Boot	1	35285

## CONTACTOR PLATE ASSEMBLIES

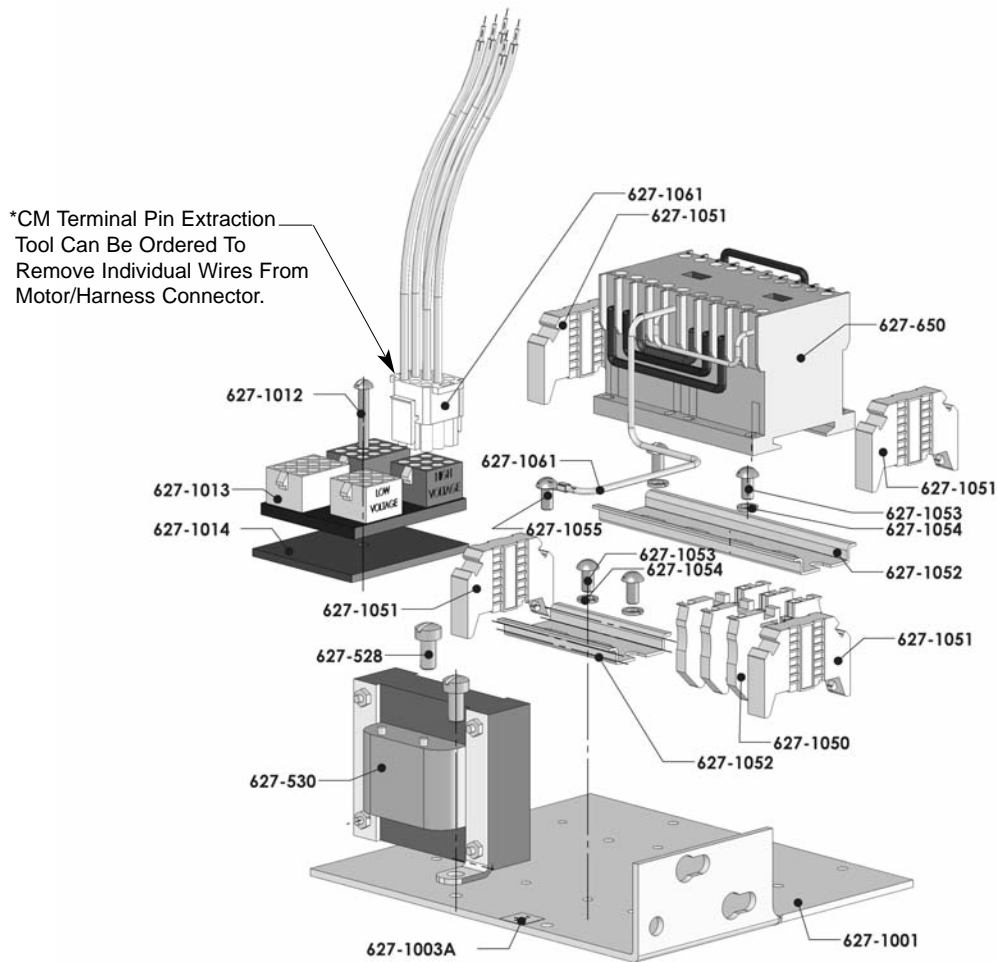
MODELS J, L, R, & RT  
SINGLE PHASE  
220/230-1-50/60



Key Number	Part Name	No. Req'd	Part Number
627-418	Start Capacitor	1	35279
627-418A	Run Capacitor	1	35278
627-423	Start/Run Capacitor Mounting Clamp	2	35268
627-424	Mounting Clamp Screw	6	982873
627-650	Hoist Reversing Contactor	1	27013 (115 Volt Coil) 27104 (48 Volt Coil) 27105 (24 Volt Coil)
627-1001	Contactor Mounting Plate	1	29013
627-1003A	Ground Label	1	20940
627-1051	Terminal Strip End Clamp	2	29015
627-1052	Din Rail Mounting Bracket	1	29009
627-1053	Din Rail Mounting Bracket Screw	2	982686
627-1054	Din Rail Mounting Bracket Screw Lockwasher	2	987873
627-1061	Jumpers:		
	R2	1	29036
	R3	1	29037
	R4	1	29035
	R5	1	29038
	R9	1	29113
	R10	1	29034
G-Y	1	27189	
	Wiring Harness	1	29044
627-1062	Rubber Insulating Boot	1	35285

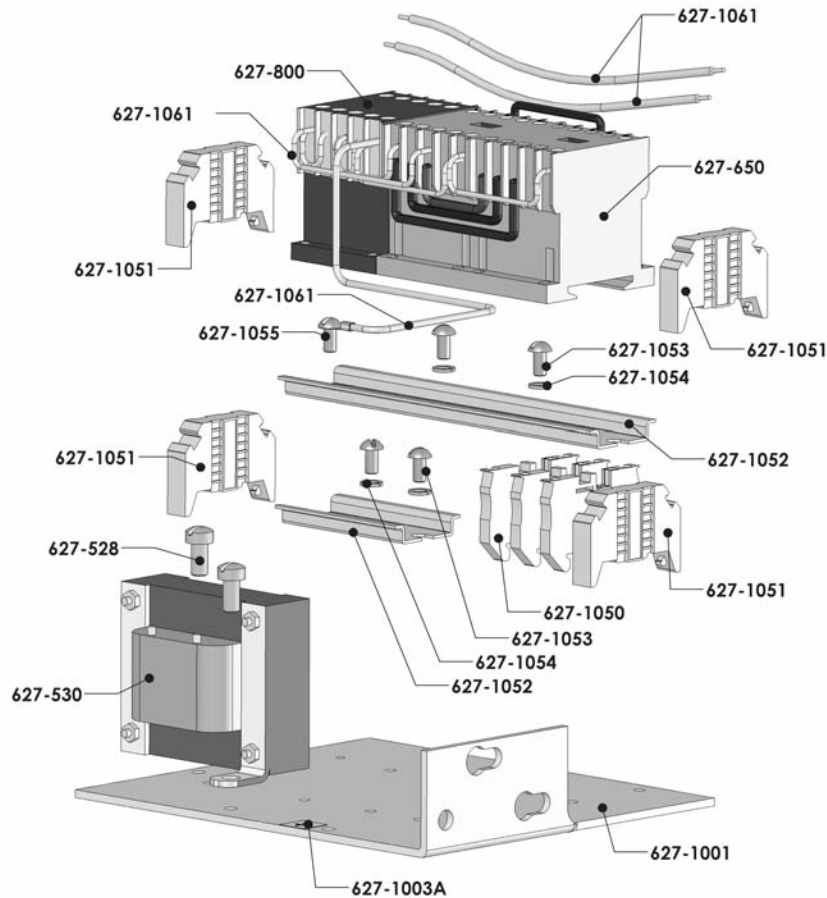
## CONTACTOR PLATE ASSEMBLIES

MODEL J, JJ, L, LL, R, RR, RT, & RRT  
 DUAL VOLTAGE, 3 PHASE  
 220/230-3-50/60, 380/415/460-3-50/60



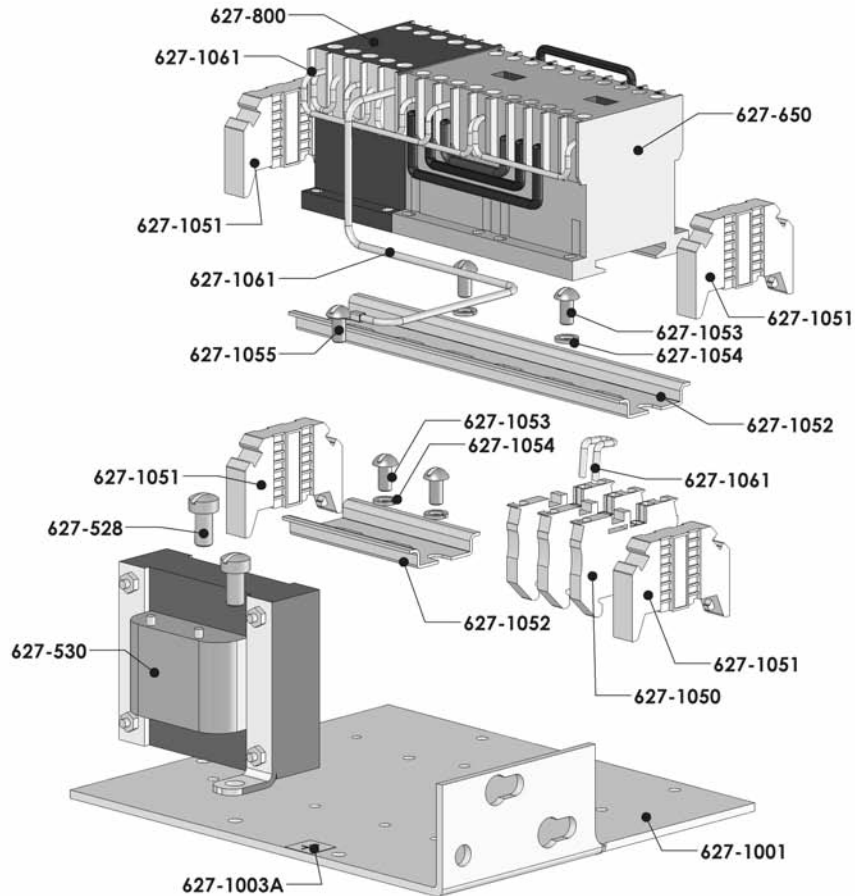
Key Number	Part Name	No. Req'd	Part Number
627-528	Transformer Mounting Screw	2	982688
627-530	Transformer	1	29734 (115 V Secondary) 29756 (48 V Secondary) 29809 (24 V Secondary) 29811 (115 V Secondary with Thermal Cutout) 29983 (48 V Secondary with Thermal Cutout) 29982 (24 V Secondary with Thermal Cutout)
627-650	Hoist Reversing Contactor	1	24799 (115 Volt Coil) 24797 (48 Volt Coil) 28860 (24 Volt Coil)
627-1001	Contactor Mounting Plate	1	29013
627-1003A	Ground Label	1	20940
627-1012	Conversion Board Mounting Screw	1	987862
627-1013	Conversion Board	1	27672
627-1014	Conversion Board Insulator	1	27685
627-1050	Terminal Strip	3	29014
627-1051	Terminal Strip End Clamp	4	29015
627-1052	Din Rail Mounting Bracket	1	29009
	Contactor Bracket	1	29008
	Terminal Strip Bracket	1	29008
627-1053	Din Rail Mounting Bracket Screw	4	982686
627-1054	Din Rail Mounting Bracket Screw Lockwasher	4	987873
627-1055	Ground Screw	1	987827
627-1061	Jumpers:		
	Contactor Jumper	1	51847
	G-Y	1	27189
	Wiring Harness	1	27102
	Wiring Harness	1	29670
*627-1063	CM Terminal Pin Extraction Tool (Not Shown)	1	21763

**CONTACTOR PLATE ASSEMBLIES**  
**MODELS J-2, JJ-2, L-2, LL-2, R-2, RR-2, RT-2, & RRT2**  
**3 PHASE, TWO SPEED**  
**220/230-3-50/60**



Key Number	Part Name	No. Req'd	Part Number
627-528	Transformer Mounting Screw	2	982688
627-530	Transformer	1	29734 (115 V Secondary) 29756 (48 V Secondary) 29809 (24 V Secondary) 29811 (115 V Secondary with Thermal Cutout) 29983 (48 V Secondary with Thermal Cutout) 29982 (24 V Secondary with Thermal Cutout)
627-650	Hoist Reversing Contactor	1	24799 (115 Volt Coil) 24797 (48 Volt Coil) 28860 (24 Volt Coil)
627-800	Hoist Speed Selecting Contactor	1	28870 (115 Volt Coil) 28871 (48 Volt Coil) 28878 (24 volt Coil)
627-1001	Contactor Mounting Plate	1	29013
627-1003A	Ground Label	1	20940
627-1050	Terminal Strip	3	29014
627-1051	Terminal Strip End Clamp	4	29015
627-1052	Din Rail Mounting Bracket Contactor Bracket Terminal Strip Bracket	1 1 1	29010 29008
627-1053	Din Rail Mounting Bracket Screw	4	982686
627-1054	Din Rail Mounting Bracket Screw Lockwasher	4	987873
627-1055	Ground Screw	1	987827
627-1061	Jumpers: R4 R5 R7 R8 W5 G-Y Speed Selector Jumper Wiring Harness	1 1 1 1 1 1 2 1	27652 27657 27760 27762 27736 27189 51845 27897

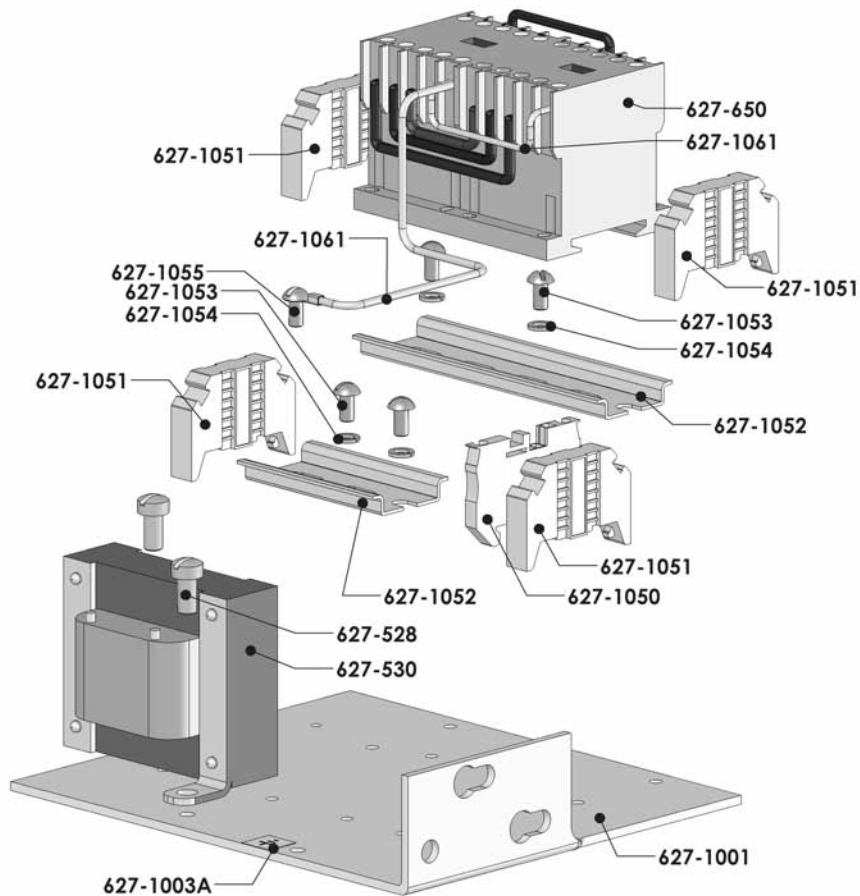
**CONTACTOR PLATE ASSEMBLIES**  
**MODELS J-2, JJ-2, L-2, LL-2, R-2, RR-2, RT-2, & RRT-2**  
**3 PHASE, TWO SPEED**  
**380/415/460-3-50/60**



Key Number	Part Name	No. Req'd	Part Number
627-528	Transformer Mounting Screw	2	982688
627-530	Transformer	1	29734 (115 V Secondary) 29756 (48 V Secondary) 29809 (24 V Secondary) 29811 (115 V Secondary with Thermal Cutout) 29983 (48 V Secondary with Thermal Cutout) 29982 (24 V Secondary with Thermal Cutout)
627-650	Hoist Reversing Contactor	1	24799 (115 Volt Coil) 24797 (48 Volt Coil) 28860 (24 Volt Coil)
627-800	Host Speed Selecting Contactor	1	28870 (115 Volt Coil) 28871 (48 Volt Coil) 28878 (24 Volt Coil)
627-1001	Contactor Mounting Plate	1	29013
627-1003A	Ground Label	1	20940
627-1050	Terminal Strip	3	29014
627-1051	Terminal Strip End Clamp	4	29015
627-1052	Din Rail Mounting Bracket Contactor Bracket Terminal Strip Bracket	1 1 1	29010 29008
627-1053	Din Rail Mounting Bracket Screw	4	982686
627-1054	Din Rail Mounting Bracket Screw Lockwasher	4	987873
627-1055	Ground Screw	1	987827
627-1061	Jumpers: R4 R5 W5 G-Y Contactor Jumper Terminal Strip Jumper Speed Selector Jumper Wiring Harness	1 1 1 1 1 1 2 1	27652 27657 27736 27189 51847 51845 51845 29600

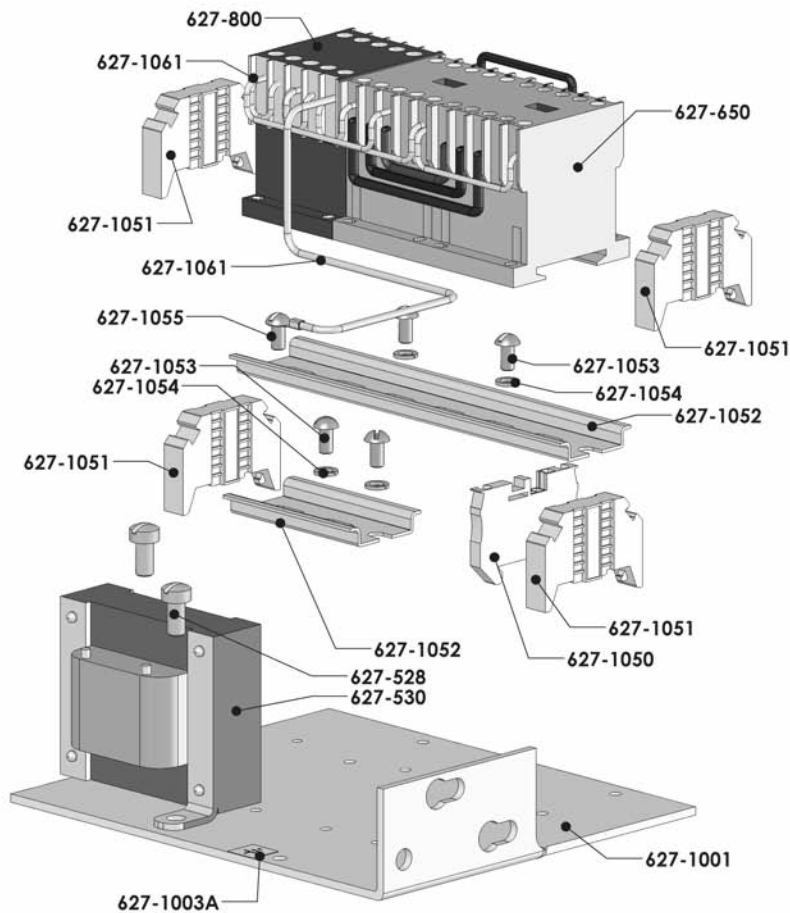
## CONTACTOR PLATE ASSEMBLIES

MODELS J, JJ, L, LL, R, RR, RT, & RRT  
3 PHASE, SINGLE SPEED  
550/575-3-50/60



Key Number	Part Name	No. Req'd	Part Number
627-528	Transformer Mounting Screw	2	982688
627-530	Transformer	1	29807 (115 V Secondary) 29805 (115 V Secondary with Thermal Cutout) 29789 (48 V Secondary with Thermal Cutout) 29984 (24 V Secondary with Thermal Cutout)
627-650	Hoist Reversing Contactor	1	24799 (115 Volt Coil) 24797 (48 Volt Coil) 28860 (24 Volt Coil)
627-1001	Contactor Mounting Plate	1	29013
627-1003A	Ground Label	1	20940
627-1050	Terminal Strip	1	29014
627-1051	Terminal Strip End Clamp	4	29015
627-1052	Din Rail Mounting Bracket	1	29009
	Contactor Bracket	1	29008
	Terminal Strip Bracket	1	29008
627-1053	Din Rail Mounting Bracket Screw	4	982686
627-1054	Din Rail Mounting Bracket Screw Lockwasher	4	987873
627-1055	Ground Screw	1	987827
627-1061	Jumpers:		
	Contactor Jumper	1	51847
	G-Y	1	27189
	Wiring Harness	1	29601

**CONTACTOR PLATE ASSEMBLIES**  
**MODELS J-2, JJ-2, L-2, LL-2, R-2, RR-2, RT-2, & RRT-2**  
**3 PHASE, TWO SPEED**  
**550/575-3-50/60**

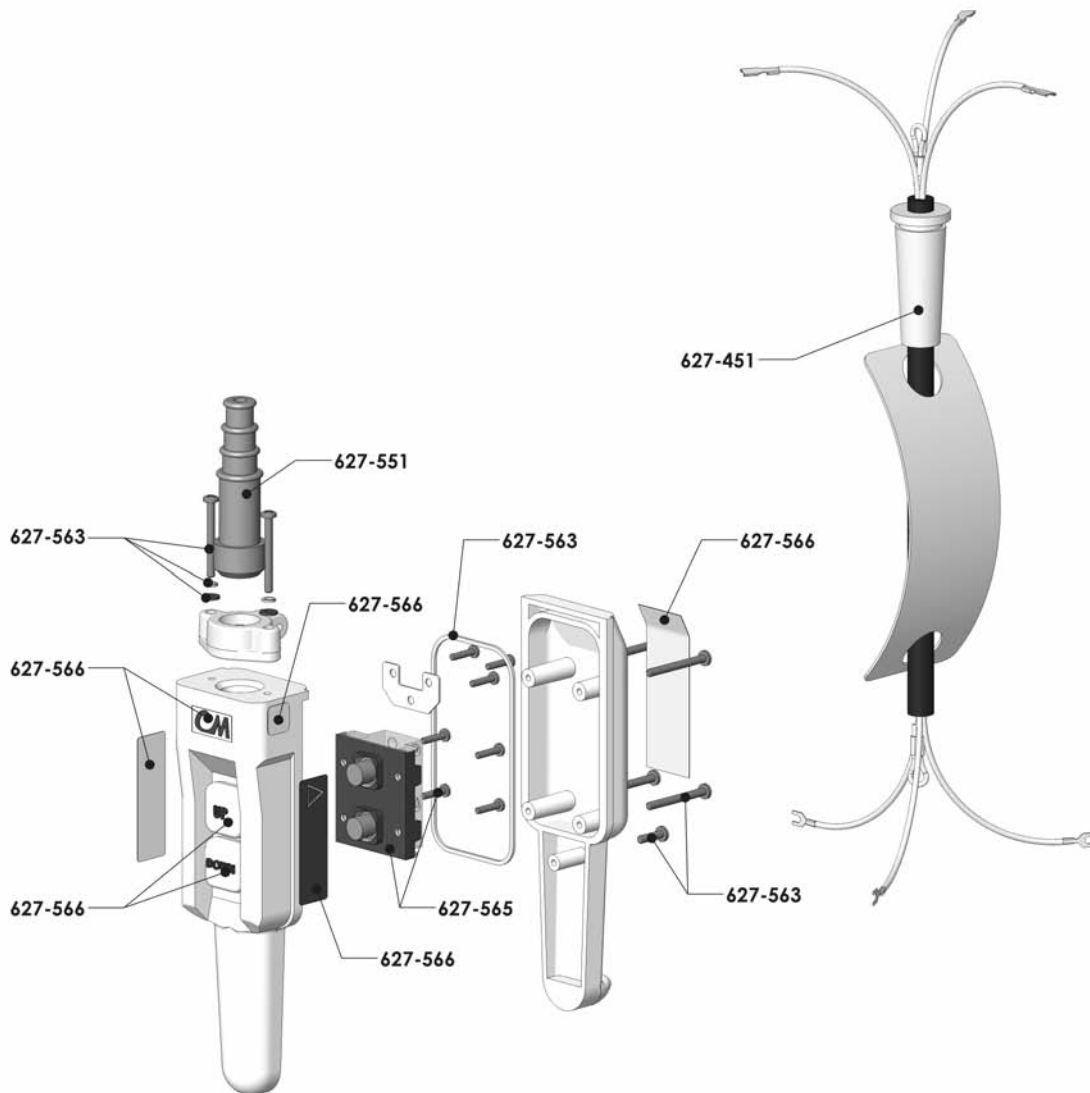


Key Number	Part Name	No. Req'd	Part Number
627-528	Transformer Mounting Screw	2	982688
627-530	Transformer	1	29807 (115 V Secondary) 29805 (115 V Secondary with Thermal Cutout) 29789 (48 V Secondary with Thermal Cutout) 29984 (24 V Secondary with Thermal Cutout)
627-650	Hoist Reversing Contactor	1	24799 (115 Volt Coil) 24797 (48 Volt Coil) 28860 (24 Volt Coil)
627-800	Host Speed Selecting Contactor	1	28870 (115 Volt Coil) 28871 (48 Volt Coil) 28878 (24 Volt Coil)
627-1001	Contactor Mounting Plate	1	29013
627-1003A	Ground Label	1	20940
627-1050	Terminal Strip	1	29014
627-1051	Terminal Strip End Clamp	4	29015
627-1052	Din Rail Mounting Bracket	1	29009
	Contactor Bracket	1	29008
	Terminal Strip Bracket	1	
627-1053	Din Rail Mounting Bracket Screw	4	982686
627-1054	Din Rail Mounting Bracket Screw Lockwasher	4	987873
627-1055	Ground Screw	1	987827
627-1061	Jumpers:		
	R4	1	27652
	R5	1	27657
	W5	1	27736
	Contactor Jumper	2	51845
	Contactor Jumper	1	51847
	G-Y	1	27189
	Wiring Harness	1	29600



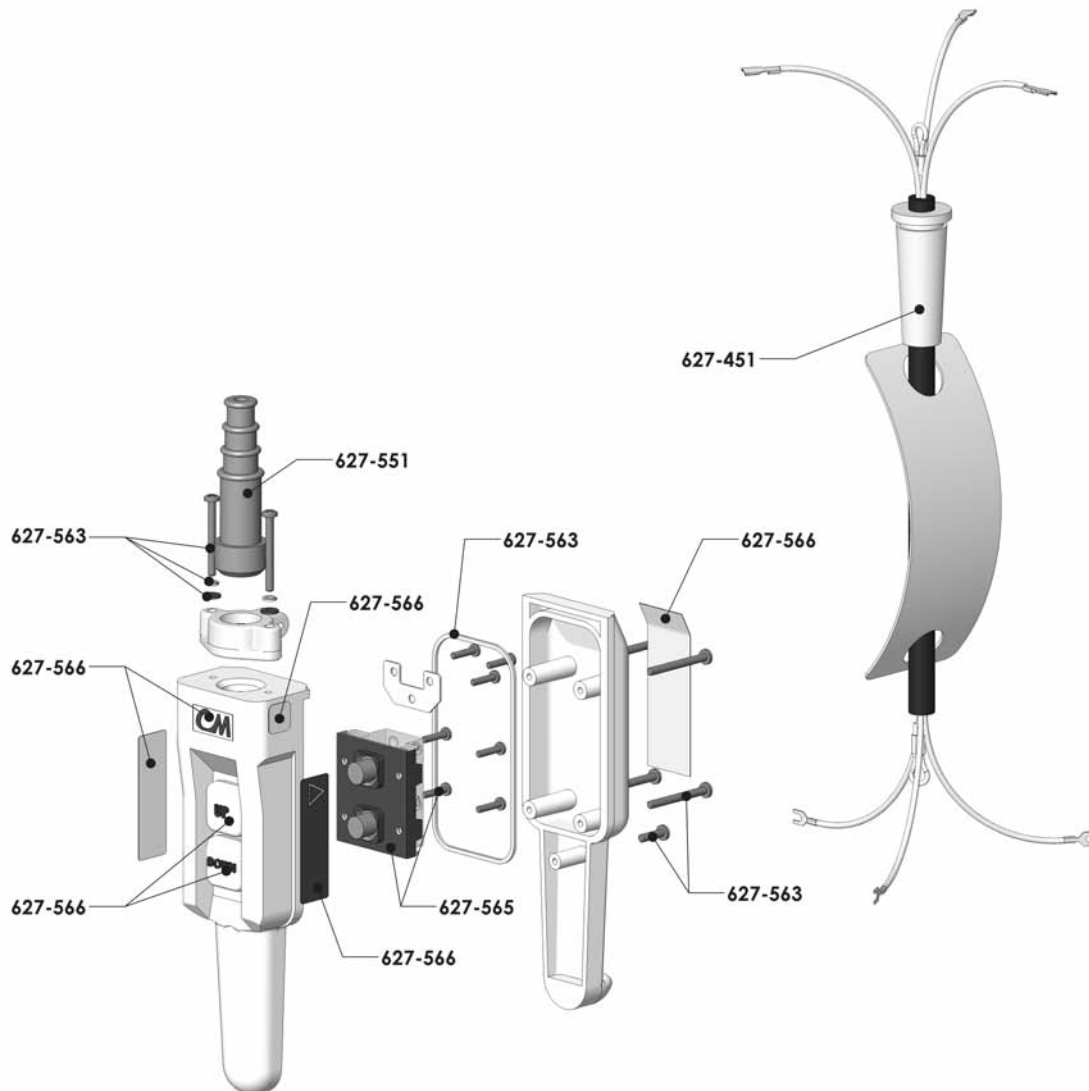
## LODESTAR HOIST CONTROL STATION

### 627-450 Complete Control Cord and Station Assembly Single Speed Hoist Control Station



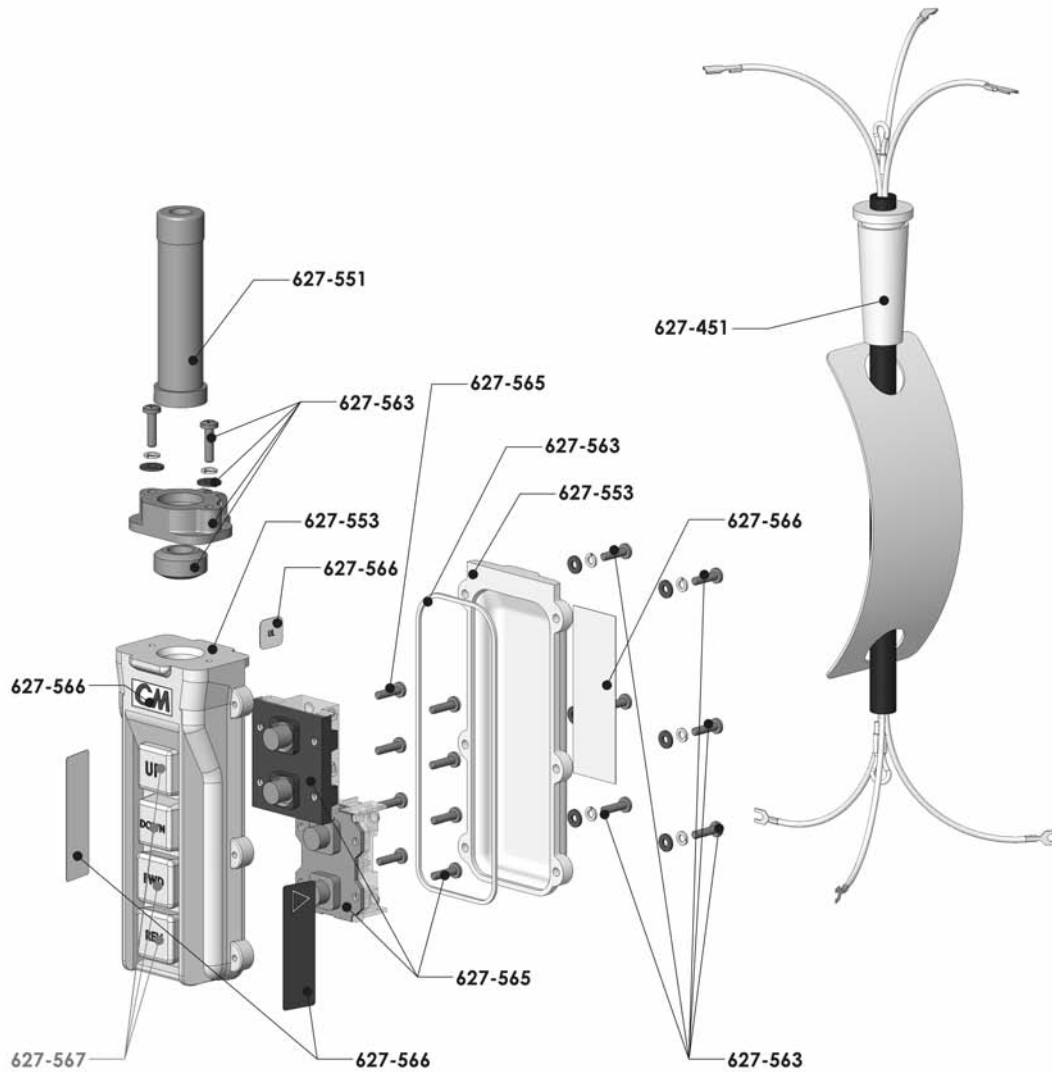
Single Speed Hoist Control Station			
Key Number	Part Name	No. Req'd	Part Number
627-450	Control Cord and Station Assembly	1	29333 for 10' Lift 29334 for 15' Lift 29335 for 20' Lift 29336 for 10' Lift for CSA Units
627-451	Standard Control Cord Assembly	1	29350 for 10' Lift 29351 for 15' Lift 29352 for 20' Lift 29353 for 10' Lift for CSA Units
627-551	Control Station Grommet	1	58278
627-552	Control Station (Includes 627-551 thru 627-567)	1	58272
627-563	Control Station Hardware Kit w/gasket	1	58275
627-565	Control Station 1-speed Insert	1	58255
627-566	Control Station Warning Label Kit (Includes Exterior Labels)	1	58276
627-567	Control Station Button Label Kit	1	58277

**627-450 Complete Control Cord and Station Assembly  
Two Speed Hoist Control Station**



<b>Two Speed Hoist Control Station</b>			
<b>Key Number</b>	<b>Part Name</b>	<b>No. Req'd</b>	<b>Part Number</b>
627-450	Control Cord and Station Assembly	1	29337 for 10' Lift 29348 for 10' Lift for CSA Units
627-451	Standard Control Cord Assembly	1	29354 for 10' Lift 29349 for 10' Lift for CSA Units
627-551	Control Station Grommet	1	58278
627-552	Control Station (Includes 627-551 thru 627-567)	1	58273
627-563	Control Station Hardware Kit w/gasket	1	58275
627-565	Control Station 2-speed Insert	1	58256
627-566	Control Station Warning Label Kit (Includes Exterior Labels)	1	58276
627-567	Control Station Button Label Kit	1	58277

**627-450 Complete Control Cord and Station Assembly  
Four Directional Hoist Control Station**



<b>Four Directional Control Station</b>			
<b>Key Number</b>	<b>Part Name</b>	<b>No. Req'd</b>	<b>Code</b>
627-451	Standard Control Cord Assembly	1	51708
627-551	Control Station Grommet	1	58278
627-552	Control Station (Includes 627-551 Thru 627-567)	1	58220 CM
627-553	Control Station Housing Kit (Includes Housing, Boots, Collar, Gasket & Hardware)	1	58288
627-563	Control Station Hardware Kit w/gasket	1	58279
627-565	Control Station 1-Speed Insert	1	58255
	Control Station 2-Speed Insert	1	58256
627-566	Control Station Warning Label Kit	1	58276
627-567	Control Station Button Label Kit	1	58277



## SERIES 635 LOW HEADROOM TROLLEY PARTS LIST

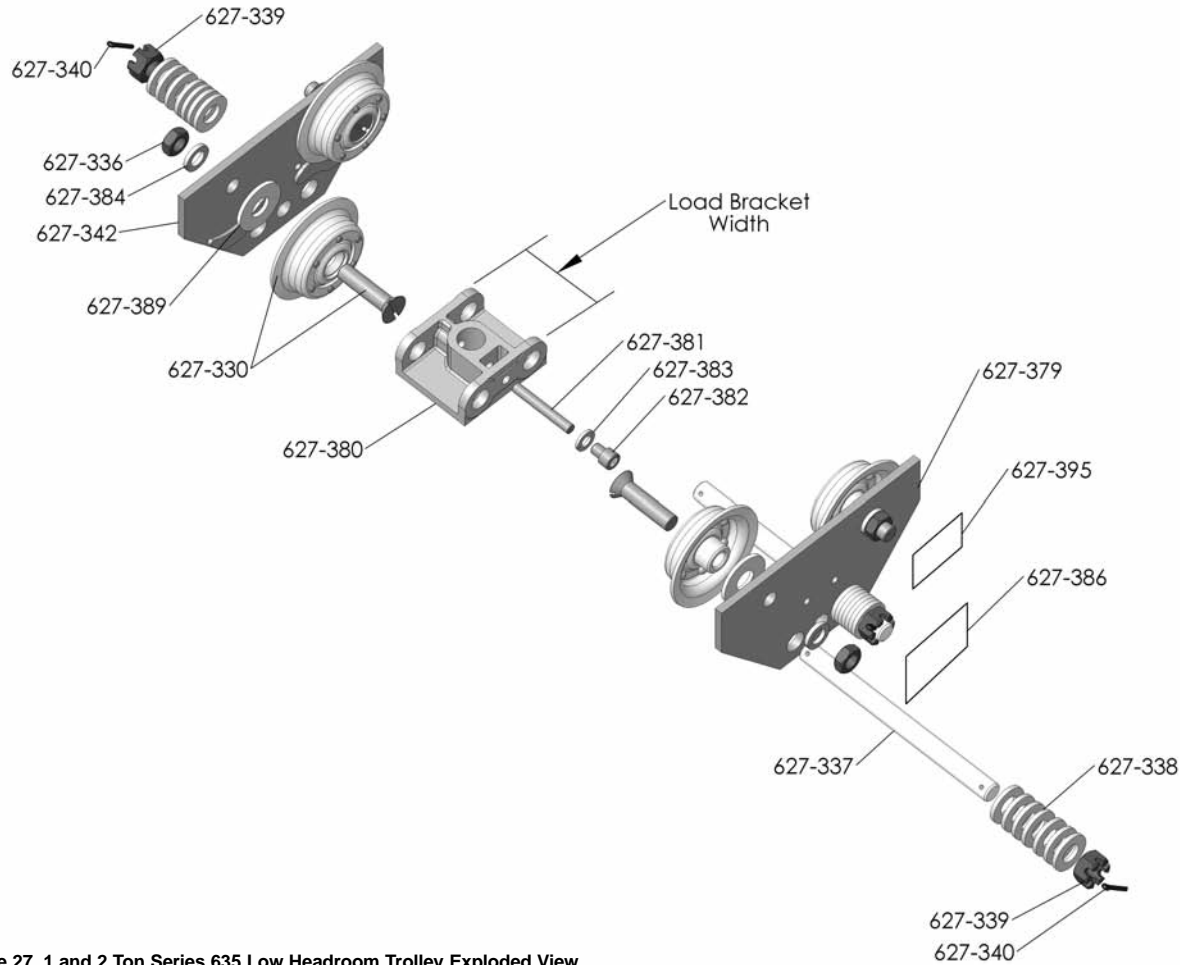


Figure 27. 1 and 2 Ton Series 635 Low Headroom Trolley Exploded View

Key No.	Part Name	No. Req'd.		Part Number	
		1 Ton	2 Ton	1 Ton	2 Ton
627-330	TrackWheel	4	4	35774	50762
627-336	TrackWheel Stud Nut	4	4	982520	948804
627-337	Suspension Bolt (Special Alloy Special Alloy Steel Bolt)				
	*9 5/32" Long	2	-	35450	-
	**10 1/4" Long	2	-	35407	-
	†10" Long	-	2	-	35445
	††12 1/16" Long	-	2	-	35414
627-338	Trolley Spacer Washers				
	* 0.165" Thick	40	-	35782	-
	**0.125" Thick	38	-	958822	-
	† 0.165" Thick	-	32	-	35783
627-339	Suspension Bolt Nut	4	4	948803	958818
	Suspension Bolt Nut Cotter Pin	4	4	988343	988368
627-342	***Side Frame, Plain Side, w/o Trolley Guards	2	2	35640	35654
	***Side Frame, Plain Side, Trolley Guards	2	2	35635	35636
627-379	***Side Frame, I.D., Plate Side, w/o Trolley Guards	2	2	35640	35654
	***Side Frame, I.D., Plate Side, Trolley Guards	2	2	35635	35636
627-380	Load Bracket	1	1	-	-
	* 3 7/16" Wide			35019	-
	**5 13/32" Wide			35024	-
	† 4 3/16" Wide			-	35033
	††6 11/16" Wide			-	35043

Key No.	Part Name	No. Req'd.		Part Number	
		1 Ton	2 Ton	1 Ton	2 Ton
627-381	Vertical Load Bar Pin (Special Alloy Steel Pin)	1	1		
	*2 11/16" Long			35371	-
	**2 7/8" Long			-	35413
	†3 3/4" Long			-	35400
627-382	Vertical Load Bar Pin Screw	1	1		
	* 1/2" Long			982383	-
	**1 1/4" Long			982386	-
	† 3/4" Long			-	982433
	†† 1 1/2" Long			-	987209
627-383	Vertical Load Bar Pin Screw L.W.	1	1	983548	983547
627-384	TrackWheel Stud Nut L.W.	4	4	987923	987924
627-386	Identification Label	1	1	36916	36917
627-389	TrackWheel Washer	-	1	-	987903
627-395	Warning Label	1	1	936984	936984

\* These items are for the 1-Ton Trolley for operation on 2.66" thru 5.64" flange widths.

\*\* These items are for the 1-Ton Trolley for operation on over 5.64" thru 7.00" flange widths.

\*\*\* If side frame is equipped with spacer block, contact factory.

† These items are for the 2-Ton Trolley for operation on 3.33" thru 6.00" flange widths.

†† These items are for the 2-Ton Trolley for operation on over 6.00" thru 8.25" flange widths.

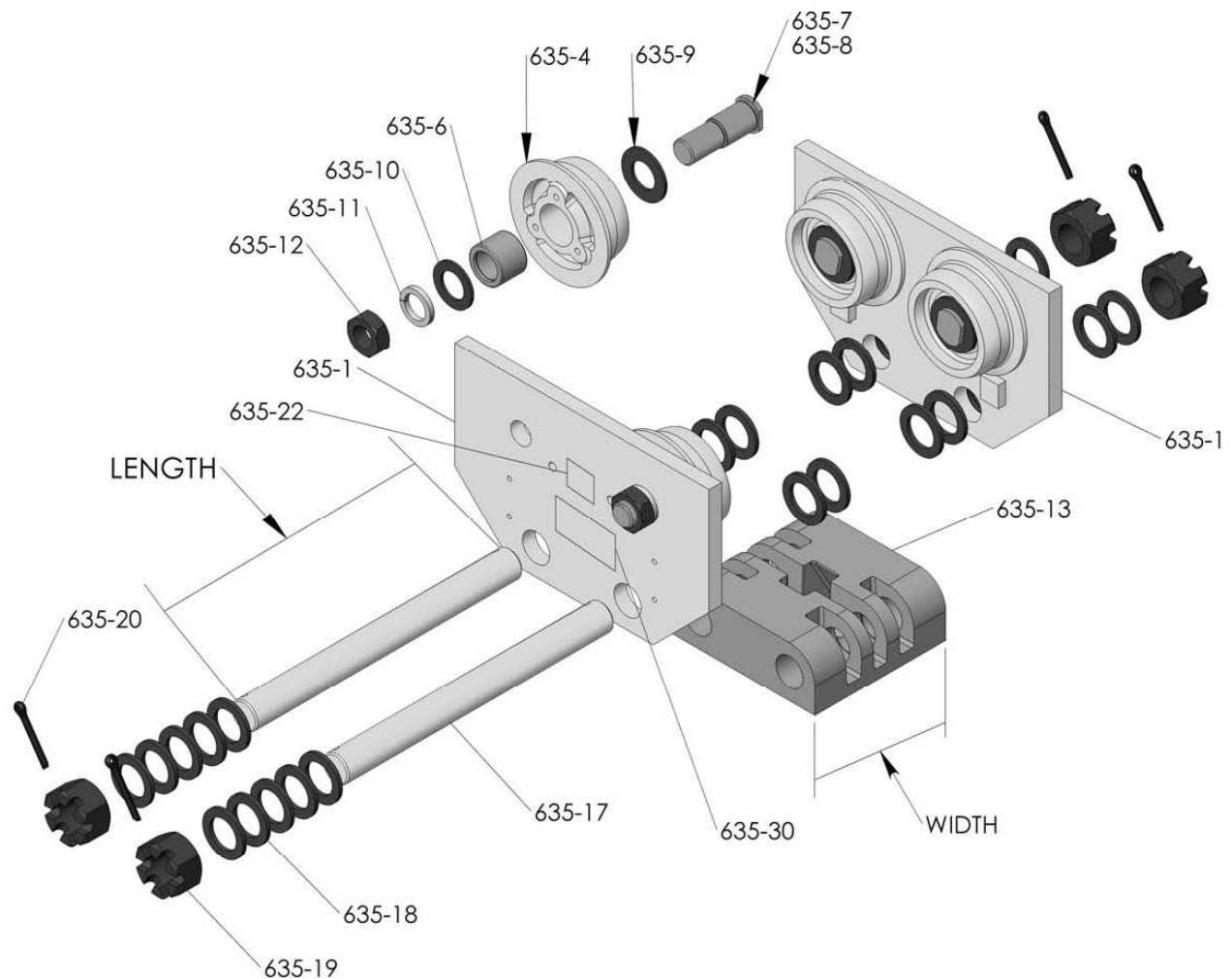


Figure 28. 3 Ton Series 635 Low Headroom Trolley Exploded View

Key No.	No. Required	Part Name	Part Number
635-1	2	Side Frame-Plain Side (Does Not Include Wheels)	36696 For 4.0" Thru 5.63" Flange Widths, 36629 For Over 5.63" Thru 7-1/4" Flange Widths. If Frame is Equipped With Trolley Guards, Contact Factory.
635-4	4	TrackWheel Plain	39002
635-6	4	TrackWheel Bearing	82113
635-7	4	TrackWheel Stud	36361
635-9	4	TrackWheel Washer-Steel	81014
635-10	4	TrackWheel Washer-Oilite	82046
635-11	4	TrackWheel Stud Lockwasher	987926
635-12	4	TrackWheel Stud Nut	988155
635-13	1	Load Bracket (Specify Width)	36012 (4-13/16" Wide), 36021 (6-7/16" Wide)
635-17	2	Suspension Bolt (Specify Length)	36367 (10-31/32" Long) For 4.00" Thru 5.63" Flange Widths 36380 (13-3/32" Long) For Over 5.63" Thru 7.25" Flange Widths If Bolt Length is Over 13-3/32", Contact Factory
635-18	30	Spacer Washer	936827
635-19	4	Suspension Bolt Nut	945835
635-20	4	Suspension Bolt Cotter Pin	988382
635-22	1	Warning Label	936984
635-30	1	Identification Label	936829