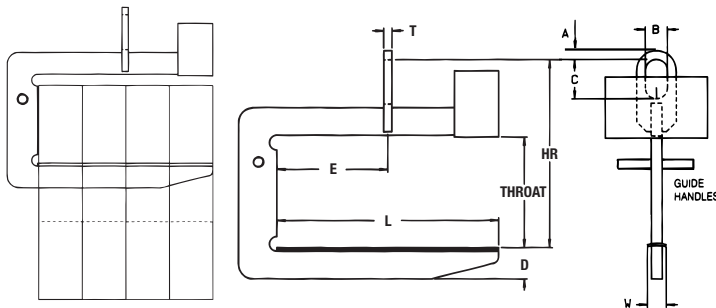


SCC SLIT COIL C-HOOK

PRODUCT FEATURES

- Designed for heavy duty applications.
- Handles multiple slit coils which maximizes handling efficiency.
- Recessed counterweight minimizes interference with equipment or other obstacles.
- High tensile alloy steel plate reduces physical size and weight.
- Counter balanced to hang level when empty.
- Inside radius on hooks avoid coil edge contact.
- Curved coil saddle is standard.
- Guide handles for ease of hook positioning.
- Available with optional padding for additional coil protection.
- Complies with ASME standards.



NOTE: E dimension is one half of "L" dimension.

WARNING

CENTER OF THE HOIST AND BAIL MUST BE IN-LINE WITH THE LOAD'S CENTER OF GRAVITY.

SPECIFICATIONS

| Model Number | Capacity (tons) | Dimensions (inches) | | | | | | | | | | Weight (lbs.) |
|--------------|-----------------|---------------------|--------|-------------|---------|---------|-------------|-----------------|---|----|--------|---------------|
| | | Coil Width Max. | Throat | Lifting Arm | | | | Bail Dimensions | | | Thk. T | |
| | | | | Length L | Depth D | Width W | HR Headroom | Opening | | | | |
| A | B | C | | | | | | | | | | |
| SCC536 | 5 | 36 | 24 | 36 | 5-5/16 | 4 | 37-1/4 | 1-1/2 | 4 | 7 | 1-1/4 | 450 |
| SCC548 | | 48 | 24 | 48 | 6-1/8 | 4 | 38 | 1-1/2 | 4 | 7 | 1-1/4 | 555 |
| SCC560 | | 60 | 24 | 60 | 6-9/16 | 4 | 38-9/16 | 1-1/2 | 4 | 7 | 1-1/4 | 649 |
| SCC7536 | 7-1/2 | 36 | 24 | 36 | 5-5/8 | 4 | 37-5/8 | 1-1/2 | 4 | 7 | 1-1/2 | 496 |
| SCC7548 | | 48 | 24 | 48 | 6-5/16 | 4 | 38-5/16 | 1-1/2 | 4 | 7 | 1-1/2 | 731 |
| SCC7560 | | 60 | 24 | 60 | 7-1/8 | 4 | 38-7/8 | 1-1/2 | 4 | 7 | 1-1/2 | 898 |
| SCC1048 | 10 | 48 | 24 | 48 | 7-3/16 | 4 | 41-1/8 | 2 | 5 | 9 | 1-3/4 | 932 |
| SCC1060 | | 60 | 24 | 60 | 7-5/16 | 4 | 41-1/8 | 2 | 5 | 9 | 1-3/4 | 1281 |
| SCC1072 | | 72 | 24 | 72 | 7-1/4 | 4 | 41-1/8 | 2 | 5 | 9 | 1-3/4 | 1570 |
| SCC1548 | 15 | 48 | 30 | 48 | 7-1/4 | 4 | 47-7/8 | 2 | 5 | 9 | 1-3/4 | 1510 |
| SCC1560 | | 60 | 30 | 60 | 8 | 4 | 48 | 2 | 5 | 9 | 1-3/4 | 1789 |
| SCC1572 | | 72 | 30 | 72 | 8-7/8 | 4 | 48-3/4 | 2 | 5 | 9 | 1-3/4 | 2120 |
| SCC2060 | 20 | 60 | 30 | 60 | 9-1/8 | 4 | 52-1/8 | 2-3/4 | 6 | 12 | 2 | 2125 |
| SCC2072 | | 72 | 30 | 72 | 9-15/16 | 4 | 52-15/16 | 2-3/4 | 6 | 12 | 2 | 2485 |
| SCC2560 | 25 | 60 | 34 | 60 | 9-1/8 | 4 | 57-3/4 | 3-1/4 | 6 | 14 | 2-1/2 | 2840 |
| SCC2572 | | 72 | 34 | 72 | 9-3/4 | 4 | 58-1/2 | 3-3/4 | 6 | 14 | 2-1/2 | 3350 |

Other sizes available, consult factory.