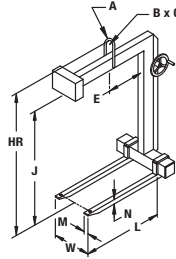


HWPL HAND WHEEL ADJUSTABLE FORKS PALLET LIFTER

PRODUCT FEATURES

- Hand wheel adjustable forks for ease of adjustment.
- Converts overhead crane to lift truck.
- Handles multiple pallet sizes.
- Complies with ASME standards.



SPECIFICATIONS

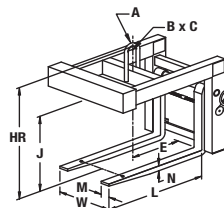
Model Number	Capacity (tons)	Dimensions (inches)											Weight (lbs.)
		Forks			W		E	Bail			J*	HR	
L	M	N	Min.	Max.	A	B		C					
HWPL136	1	36	2	2	16	38	18	1	3	5	48	58	890
HWPL142	1	42	2	2	16	38	21	1	3	5	48	58-1/2	800
HWPL148	1	48	2	2	16	38	24	1	3	5	48	58-1/2	1051
HWPL1536	1-1/2	36	3	2	22-1/2	38	18	1	3	5	48	58	1000
HWPL1542	1-1/2	42	3	2	22-1/2	38	21	1	3	5	48	60	1055
HWPL1548	1-1/2	48	3	2	22-1/2	38	24	1	3	5	48	60	1130
HWPL236	2	36	3	2	22-1/2	38	18	1	3	5	48	60	1105
HWPL242	2	42	4	2	23	38	21	1	3	5	48	60	1351
HWPL248	2	48	4	2	24	38	24	1	3	5	48	59-1/2	1360
HWPL342	3	42	5	2	23	38	21	1-1/2	4	7	48	61-1/2	1465
HWPL348	3	48	4-1/2	2-1/2	24	38	24	1-1/2	4	7	48	63-1/2	1600
HWPL354	3	54	4-1/2	2-1/2	24	38	27	1-1/2	4	7	48	63	2130
HWPL448	4	48	5	3	28-1/2	38	24	1-1/2	4	7	48	62-1/2	2035
HWPL460	4	60	5	3	28-1/2	38	30	1-1/2	4	7	60	76	2385
HWPL548	5	48	5	3	25-1/2	38	24	1-1/2	4	7	48	65	2550
HWPL560	5	60	4-1/2	2-1/2	25-1/2	38	30	1-1/2	4	7	60	79	2740

* We recommend an additional 3"-4" clearance above the load for ease of loading and unloading the lifter.

HHWPL HEAVY DUTY HAND WHEEL ADJUSTABLE FORKS PALLET LIFTER

PRODUCT FEATURES

- Hand wheel adjustable forks for ease of adjustment.
- Forged forks allow for smaller fork sizes.
- Double frame design for heavy capacities.
- Complies with ASME standards.



SPECIFICATIONS

Model Number	Capacity (tons)	Dimensions (inches)											Weight (lbs.)
		Forks			W		E	Bail			J*	HR	
L	M	N	Min.	Max.	A	B		C					
HHWPL7548	7-1/2	48	6	2-1/2	20	48	24	2	5	9	48	66	2600
HHWPL7560	7-1/2	60	6	3	20	48	30	2	5	9	60	77-1/2	3500
HHWPL7572	7-1/2	72	6	3	20	48	36	2	5	9	60	80	3950
HHWPL1048	10	48	6	3	20	48	24	2	5	9	48	65-1/2	3150
HHWPL1060	10	60	6	3	20	48	30	2	5	9	60	77-1/2	3850
HHWPL1072	10	72	7	3	20	48	36	2	5	9	60	82	4250
HHWPL12548	12-1/2	48	6	3	20	48	24	2	6	12	48	82	4200
HHWPL12560	12-1/2	60	6	3	20	48	30	2	6	12	60	82	4950
HHWPL12572	12-1/2	72	7	3-1/2	20	48	36	2	6	12	60	82	5750
HHWPL1560	15	60	7	3-1/2	20	48	30	2	6	12	60	82	5300
HHWPL1572	15	72	8	3-1/2	20	48	36	2	6	12	60	82-1/2	6400

* We recommend an additional 3"-4" clearance above the load for ease of loading and unloading the lifter.

