

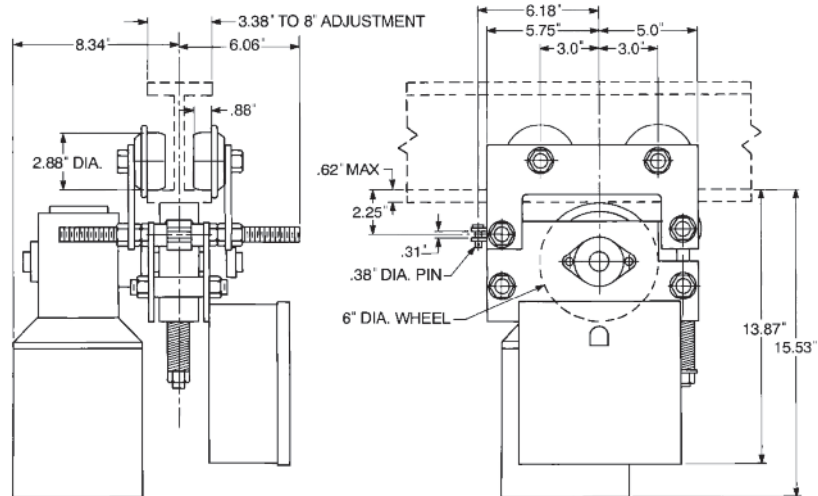
Tractor drive

Power tractor drives push-type hoists, trolleys and underhung cranes. Easy installation without removing or modifying existing equipment. This drive also features:

- Compact design
- Capacities up to 5 tons available in 230/460-3-60 operation
- Monorail trolley track or twin unit synchronized drives available
- Direct drive with right angle worm gear reducer
- Enclosed aluminum housing for lubrication of gears and bearings
- Steel plate construction with tie-rods for easy adjustment
- Squirrel cage motor with permanently lubricated bearings
- Fully machined trolley wheels with universal tread operate on tapered or flat flange beams
- Adjusts to standard I-beams or flat flange beams up to 8 inches wide
- Standard magnetic reversing contactor with mechanical interlock inside NEMA 1 enclosure
- One-year warranty
- Made in U.S.A.

Options

- 575 volt 3 phase 60 hertz operation
- 2, 4, 6 & 8 button push-button station
- Additional push-button cable length (10' standard)
- NEMA 12, 4 or 4X control enclosures
- Motor brake
- Soft start (recommended for speeds above 70 F.P.M.)
- Two speed or variable controls
- Transformer for 115 volt control power
- Tow bar
- For other beams, options or custom designs, consult factory



| Rated capacity* (tons) | Product code | Speed (F.P.M.) | Motor H.P. | Motor RPM | Std. beam size (in.) | Min. radius curve (in.) | Approx. Max. flange thickness (in.) | shipping wt. (lbs.) |
|------------------------|--------------|----------------|------------|-----------|----------------------|-------------------------|-------------------------------------|---------------------|
| 1 | TD 235 | 35 | 1/4 | 900 | 3.38-8 | 36 | .62 | 110 |
| 1 | TD 255 | 55 | 1/4 | 900 | 3.38-8 | 36 | .62 | 110 |
| 1 | TD 270 | 70 | 1/4 | 900 | 3.38-8 | 36 | .62 | 110 |
| 1 | TD 2105 | 105 | 1/4 | 900 | 3.38-8 | 36 | .62 | 110 |
| 1½ | TD 335 | 35 | 1/4 | 900 | 3.38-8 | 36 | .62 | 110 |
| 1½ | TD 355 | 55 | 1/4 | 900 | 3.38-8 | 36 | .62 | 110 |
| 1½ | TD 370 | 70 | 1/4 | 900 | 3.38-8 | 36 | .62 | 110 |
| 1½ | TD 3105 | 105 | 1/4 | 900 | 3.38-8 | 36 | .62 | 110 |
| 2½ | TD 535 | 35 | 1/4 | 900 | 3.38-8 | 36 | .62 | 110 |
| 2½ | TD 555 | 55 | 1/4 | 900 | 3.38-8 | 36 | .62 | 110 |
| 2½ | TD 570 | 70 | 1/4 | 900 | 3.38-8 | 36 | .62 | 110 |
| 3 | TD 635 | 35 | 1/4 | 900 | 3.38-8 | 36 | .62 | 110 |
| 3 | TD 655 | 55 | 1/4 | 900 | 3.38-8 | 36 | .62 | 110 |
| 5 | TD 1035 | 35 | 1/4 | 900 | 3.38-8 | 36 | .62 | 110 |