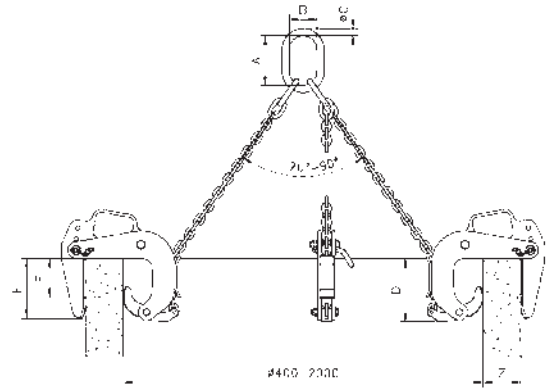


Camlok Clamps

BTG



- Solid construction design
- Sold in sets of 3 with chain slings attached
- Simple handling
- Large jaw capacity
- Light weight design
- Service friendly



Model	Working Load Limit (Per set of 3)	Jaw Capacity (Z)	Dimensions						Weight	
			A	B	C	D	E (Mouth)	F (Pressure Line)		
Imperial										
	lb.	in.	in.	in.	in.	in.	in.	in.	in.	lb.
BTG1500/3	3,300	1-1/2 to 4-3/4	5.315	5.315	0.709	7.087	6.496	3.937		75.0
BTG3000/3	6,600	2 to 7	6.890	3.937	1.024	12.205	9.646	6.890		132.3
BTG3000L/3	6,600	3-1/2 to 8-5/8	6.890	3.937	1.024	12.205	9.646	6.890		172.0

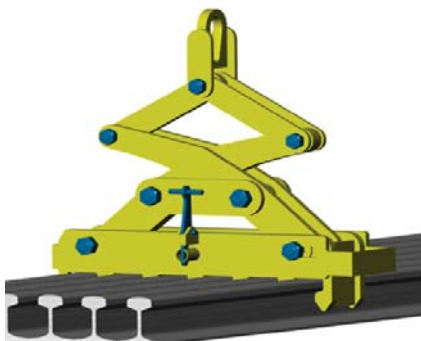
BTR



- Lift pipe diameters up to 60"
- Fitted with rubber pads to protect pipe
- Automatic open/close device
- Lifts and positions directly into trench
- Adjustable jaws to accommodate various size pipes

Model	Working Load Limit	Jaw Capacity		Weight
		Minimum	Maximum	
Imperial				
	lb.	in.	in.	lb.
BTR2.5/700	5,500	11	27	304.2
BTR2.5/1100	5,500	28	43	368.2
BTR3.5/600	7,700	12	23	291.0
BTR3.5/1000	7,700	24	39	352.7
BTR3.5/1500	7,700	40	59	385.8

MRC Multi Rail Grabs



- Modular design
- Various combo sections can fit onto one scissor lift
- Alternate combo sections can be purchased separately
- Allows for fast handling of bulk rails

Model	Working Load Limit	Number of Rails	Width	Weight
Imperial				
	lb.	in.	in.	lb.
MRC4	11,000	4	Min 37 in.	441.0
MRC5	11,000	5	Overall size depends on type and number of rails	507.0
MRC6*	13,200	6		584.0
MRC7*	15,400	7		650.0
MRC8*	17,000	8		727.0

*Not Stocked