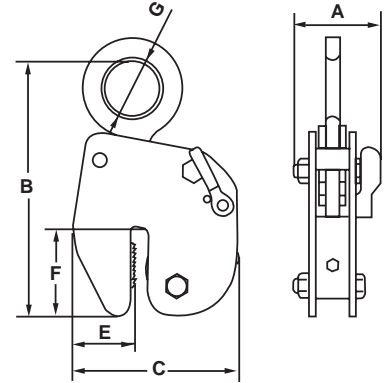


HG



- Can be used on hot rolled structural steel plates
- Can be used to lift stainless steel plates or plates with harden surfaces due to cold rolling
- Lift plates from horizontal to vertical positions and vice versa through 180°
- Clamp has serrated teeth and will mark plate



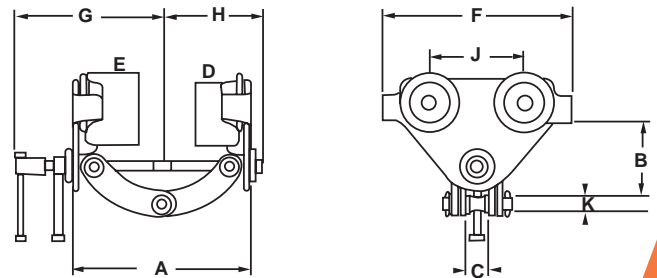
Model	Working Load Limit		Jaw Capacity	Dimensions							Weight
	Min	Max		A	B	C	D	E	F	G	
Imperial											
	lb.	lb.	in.	in.	in.	in.	in.	in.	in.	in.	lb.
HG0.5	100	1,100	0 to 3/8	1.654	9.055	5.827	0.394	2.165	3.110	1.969	11.0
HG1	150	2,000	0 to 5/8	3.661	11.698	8.268	0.630	2.638	4.488	2.638	26.5
HG2	450	4,400	0 to 3/4	4.331	16.378	12.008	0.787	4.016	6.260	3.150	48.5
HG3*	700	6,600	0 to 3/4	4.331	16.378	12.008	0.787	4.016	6.260	3.150	59.5
HG4*	900	8,800	0 to 3/4	4.724	13.189	12.008	0.787	4.016	6.220	3.150	70.5

*Not Stocked

CTP



- Adjustable to fit various flange widths
- Pre lubricated ball bearings on each unit
- Easily attaches Hoist, Pulleys and Slings



Model	Working Load Limit	Jaw Capacity	Min Curve Radius	Dimensions												Weight
				A		B		C	D	E	F	G	H	J	K	
				Min	Max	Min	Max									
Imperial																
	lb.	in.	in.	in.	in.	in.	in.	in.	in.	in.	in.	in.	in.	in.	in.	lb.
CTP1	2,200	2-3/8 to 5-7/8	0.035	3.740	7.283	3.228	4.291	1.024	2.598	2.874	6.299	6.024	4.134	2.953	0.866	4.9
CTP2	4,400	3 to 7-7/8	0.045	4.921	9.843	4.173	6.102	1.654	3.543	3.937	10.236	8.071	5.472	5.118	0.787	21.8
CTP3	8,800	3 to 7-7/8	0.055	5.315	10.236	5.039	6.732	1.969	4.331	4.921	12.205	8.661	6.102	5.906	0.866	38.6