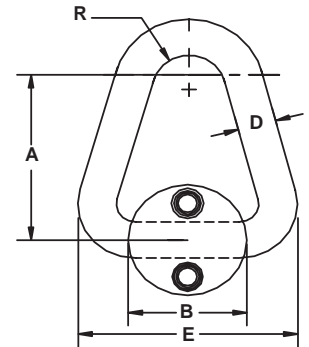


Hoist Ring Swivel



- Hoist Rings are heat treated
- 6:1 design factor
- Screws are not included

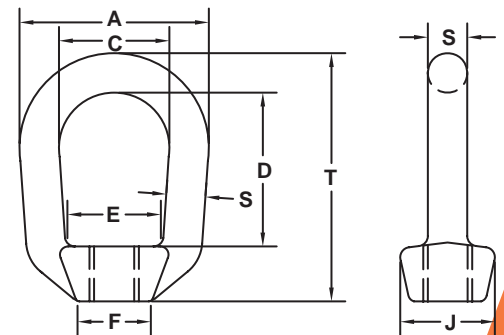


Product Code	Rated Load	Dimensions					Torque Load	Weight	High Strength Screws			
		A	B	D	E	R			Product Code	Screw Thread	Screw Length	
Imperial												
	lb.	in.	in.	in.	in.	in.	Ft.-Load	lb.			in.	
434030	2,000	2	1-3/4	5/16	2-1/2	1/2	4-7	1.72	423812	43,236	1.25	
434035	2,500	2-1/2	2-1/4	3/8	3-3/16	5/8	7-10	1.82	423813	42,437	1.25	
434040	5,500	3	2-5/8	1/2	3-7/8	3/4	20-25	1.89	423804	41,276	2.00	
434045	12,000	4	3-1/8	3/4	5-1/4	7/8	20-25	2.50	423805	41,276	2.25	
434050	20,000	5	3-5/8	1	6-3/16	1	42-50	6.80	433645	40,671	2.75	

Tapped Eye Nuts



- Forged steel
- Heat treated
- Meets the requirements of ASME B30.26
- Hot galvanized per ASTM A153



Size S	Working Load Limit	Product Code			Thread Hole	Dimensions							Weight
		Galvanized	Self Colored	As Forged		A	C	D	E	F	J	T	
Imperial													
in.	lb.					in.	in.	in.	in.	in.	in.	in.	lb.
3/8	2,250	M2602	M2602SC	1X2102	1/2 - 13	2.00	1.250	1.812	1.000	0.88	1.063	2.87	0.30
1/2	3,600	M2603	M2603SC	1X2103	5/8 - 11	2.50	1.500	2.063	1.160	0.94	1.312	3.31	0.58
5/8	5,200	M2604	M2604SC	1X2104	3/4 - 10	3.00	1.750	2.437	1.375	1.19	1.500	4.00	0.97
3/4	7,200	M2607	M2607SC	1X2107	7/8 - 9	3.50	2.000	2.687	1.625	1.31	1.875	4.50	1.76
1	15,500	M2609	M2609SC	1X2109	1 1/4 - 7	4.75	2.750	3.531	2.000	1.50	2.062	5.88	3.81
1-1/8	18,500	M2611	M2611SC	1X2111	1 3/8 - 6	5.50	3.250	3.875	2.531	2.06	3.000	6.73	6.25