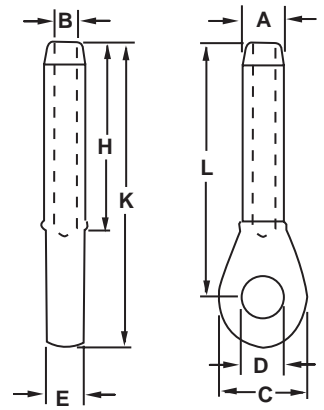




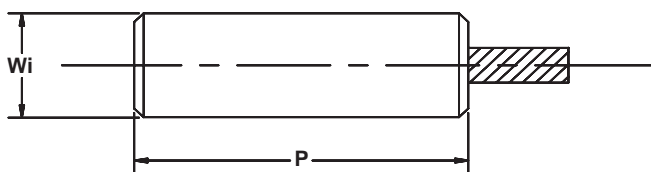
Swage Socket (Closed)

- Forged from fine grain, special bar quality C-1035 steel
- Spheroidized annealed for cold swaging
- Recommended for use on 6" x 19" or 6" x 37" IWRC regular lay wire ropes. Can also be used on galvanized bridge rope. NOT FOR USE ON FIBER CORE OR LANG LAY ROPES
- Sockets have 100% efficiency rating based on catalog strength of wire rope when properly applied



Size	Product Code	Dimensions								After Swage dia.	Weight
		A	B	C	D	E	H	K	L		
Imperial											
in.		in.	in.	in.	in.	in.	in.	in.	in.	in.	lb.
1/4	697151	0.495	0.272	1-7/16	0.750	1/2	2-1/8	4-3/8	3-1/2	0.438	0.34
5/16	697152	0.770	0.339	1-11/16	0.875	11/16	3-3/16	5-1/2	4-1/2	0.688	0.79
3/8	697153	0.770	0.406	1-11/16	0.875	11/16	3-3/16	5-1/2	4-1/2	0.688	0.78
7/16	697154	0.982	0.484	2	1.063	7/8	4-1/4	6-15/16	5-3/4	0.875	1.45
1/2	697155	0.982	0.547	2	1.063	7/8	4-1/4	6-15/16	5-3/4	0.875	1.38
9/16	697156	1.257	0.609	2-1/2	1.250	1-1/8	5-5/16	8-3/4	7-1/4	1.125	2.78
5/8	697157	1.257	0.672	2-1/2	1.250	1-1/8	5-5/16	8-3/4	7-1/4	1.125	2.75
3/4	697158	1.545	0.796	3	1.438	1-5/16	6-3/8	10-3/8	8-5/8	1.375	5.00
7/8	697159	1.700	0.938	3-1/2	1.688	1-1/2	7-7/16	12-1/8	10-1/8	1.500	7.50
1	697160	1.975	1.062	4	2.063	1-3/4	8-1/2	13-3/4	11-1/2	1.750	11.20
1-1/8	697161	2.245	1.188	4-1/2	2.313	2	9-9/16	15-1/4	12-3/4	2.000	15.80
1-1/4	697162	2.525	1.328	5	2.563	2-1/4	10-5/8	17-1/4	14-3/8	2.250	23.00
1-3/8	697163	2.800	1.453	5-1/4	2.563	2-1/4	11-11/16	18-7/8	15-3/4	2.500	31.00
1-1/2	697164	3.075	1.578	5-1/2	2.813	2-1/2	12-3/4	20-3/8	17	2.750	39.00
1-3/4	697165	3.385	1.859	6-3/4	3.563	3	14-7/8	24	20	3.000	52.00

Swage Buttons



- Fittings machined from specially selected and processed low carbon steel
- Buttons have 98% efficiency rating based on catalog strength of wire rope when properly applied

Rope Diameter	Product Code	Dimensions		Weight
		Wi	P	
Imperial				
in.		in.	in.	lb.
1/8	697101	0.375	0.625	0.025
3/16	697102	0.500	0.875	0.050
1/4	697103	0.563	1.188	0.068
5/16	697104	0.750	1.375	0.156
3/8	697105	0.750	1.750	0.188
7/16	697106	1.000	2.000	0.393
1/2	697107	1.125	2.188	0.544
9/16	697108	1.250	2.438	0.737
5/8	697109	1.375	2.875	1.062
3/4	697110	1.500	3.250	1.356
7/8	697111	1.750	3.875	2.194
1	697112	2.000	4.375	3.15
1-1/8	697113	2.250	4.813	4.575
1-1/4	697114	2.500	5.438	7.000
1-3/8	697115	2.750	6.000	9.150
1-1/2	697116	3.000	6.500	12.025