

OPERATING, MAINTENANCE & PARTS MANUAL SUPPLEMENT

HAND-OPERATED LEVER HOIST SUPPLEMENT

FOR INDUSTRIAL RIGGING
3 AND 6 TONNE CM BANDIT
LEVER CHAIN HOISTS

CM[®] BANDIT[™] LEVER CHAIN HOIST

To maintain continuous and satisfactory operation, a regular inspection procedure must be initiated so that worn or damaged parts can be replaced before they become unsafe. The following maintenance instructions pertain to CM Bandit 3 and 6 tonne lever chain hoists with the following serial numbers:

3 TONNE

1312B7711-1312B7810
1401B8027-1401B8566

6 TONNE

1401B7814-1401B7863
1401B7867-1401B8026

If your CM Bandit lever hoist is included in the above listed serial numbers, you will need to add two spacers (P/N 00002387) in addition to your Pawl Kit Total Repair Parts (P/N BAN-0101) when replacing the Pawl and Pawl Spring.

If your CM Bandit lever hoist is included in the above listed serial numbers and you have replaced the Side Plate Kit Total Repair Part (P/N BAN-0022), you will no longer need to include the 2 spacers (P/N 00002387) when replacing the Pawl and Pawl Spring with the Pawl Kit Total Repair Parts (P/N BAN-0101).

DISASSEMBLY AND ASSEMBLY

When disassembling and re-assembling the units, please refer to the maintenance section of the CM Bandit O&M Manual (P/N BANMANUAL) and this supplement so that all parts are properly installed.

Prior to re-assembly, check all parts for excessive wear, cracks and distortion. Replace parts as necessary, then reassemble the unit according to the CM Bandit O&M Manual (P/N BANMANUAL) and this supplement.

TESTING

Prior to initial use, all repaired or used hoists that have not been operated for the previous 12 months shall be tested by the user for proper operation. See the CM Bandit O&M Manual (P/N BANMANUAL) for more information.

Questions regarding the Pawl and Pawl Spring (P/N BAN-0101) on your 3 and 6 tonne lever hoist should be directed to your Columbus McKinnon distributor or Columbus McKinnon technical support

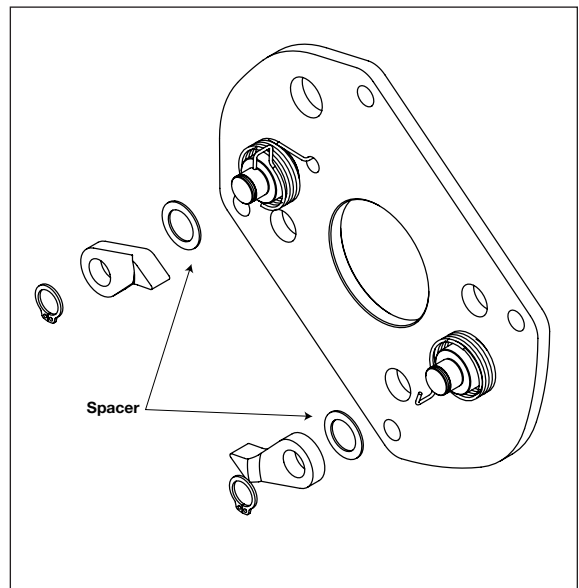


Fig 1 - Pawl and Pawl Spring with additional spacers



USA: Ph: (800) 888.0985 • (716) 689.5400 • Fax: (716) 689.5644
CANADA: Ph: (877) 264.6478 • Fax: (877) 264.6477